



Web: www.anbobio.com
www.dijibio.com
Order: order@dijibio.com
Tel: (86) 519 8805 0026

JIP2 Antibody [#C10973]

Catalog Number: C10973

Concentration: 1mg/ml

Swiss-Prot No.: Q13387

Other Names: C-jun-amino-terminal kinase-interacting protein 2, JNK-interacting protein 2, JIP-2, JNK MAP kinase scaffold protein 2, Islet-brain-2, IB-2, Mitogen-activated protein kinase 8-interacting protein 2, MAPK8IP2, IB2, JIP2, PRKM8IPL

Storage/Stability: Store at -20°C/1 year

Form of Antibody: Rabbit IgG in phosphate buffered saline (without Mg²⁺ and Ca²⁺), pH 7.4, 150mM NaCl, 0.02% sodium azide and 50% glycerol.

Immunogen: The antiserum was produced against

synthesized peptide derived from internal of human JIP2.

Purification: The antibody was affinity-purified from rabbit antiserum by affinity-chromatography using epitope-specific immunogen.

Specificity: JIP2 antibody detects endogenous levels of total JIP2 protein.

Reactivity: Human, Mouse, Rat

Applications: WB: 1:500~1:3000 IHC: 1:50~1:100

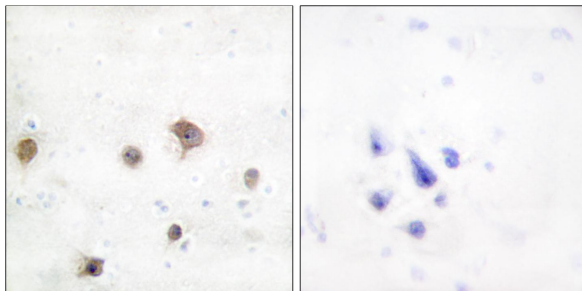
IF: 1:100~1:500 ELISA: 1:5000

References:

Yasuda J., Mol. Cell. Biol. 19:7245-7254(1999).

Negri S., Genomics 64:324-330(2000).

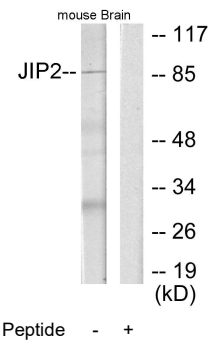
Dunham I., Nature 402:489-495(1999).



Peptide -

+

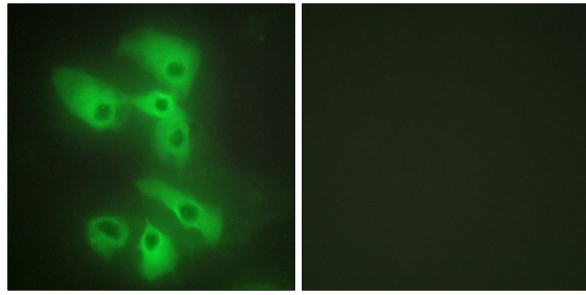
Immunohistochemistry analysis of paraffin-embedded human brain tissue using JIP2 antibody.



Peptide -

+

Western blot analysis of extracts from mouse brain cells, using JIP2 antibody.



Peptide

-

+

Immunofluorescence analysis of HeLa cells, using JIP2 antibody.