



**Web:** [www.anbobio.com](http://www.anbobio.com)  
[www.dijibio.com](http://www.dijibio.com)  
**Order:** [order@dijibio.com](mailto:order@dijibio.com)  
**Tel:** (86) 519 8805 0026

## TCOF1 Antibody [#C10977]

**Catalog Number:** C10977

**Concentration:** 1mg/ml

**Swiss-Prot No.:** Q13428

**Other Names:** Treacle protein, Treacher Collins syndrome protein, TCOF1

**Storage/Stability:** Store at -20°C/1 year

**Form of Antibody:** Rabbit IgG in phosphate buffered saline (without Mg<sup>2+</sup> and Ca<sup>2+</sup>), pH 7.4, 150mM NaCl, 0.02% sodium azide and 50% glycerol.

**Immunogen:** The antiserum was produced against synthesized peptide derived from internal of human TCOF1.

**Purification:** The antibody was affinity-purified from

rabbit antiserum by affinity-chromatography using epitope-specific immunogen.

**Specificity:** TCOF1 antibody detects endogenous levels of total TCOF1 protein.

**Reactivity:** Human, Mouse

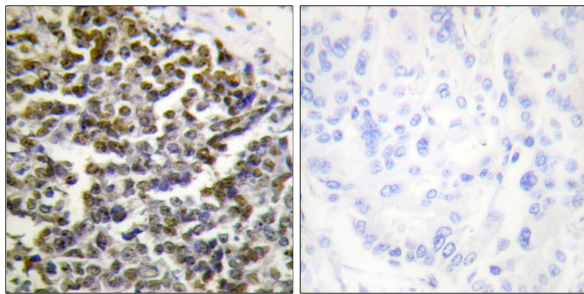
**Applications:** WB: 1:500~1:3000 IHC: 1:50~1:100  
ELISA: 1:10000

**References:**

Dixon J., Nat. Genet. 12:130-136(1996).

Wise C.A., Proc. Natl. Acad. Sci. U.S.A. 94:3110-3115(1997).

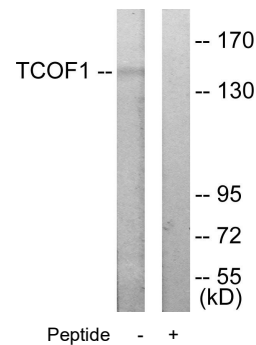
So R.B., Gene 328:49-57(2004).



Peptide -

+

Immunohistochemistry analysis of paraffin-embedded human lung carcinoma tissue using TCOF1 antibody.



TCOF1 --

Peptide - +

Western blot analysis of extracts from Jurkat cells, using TCOF1 antibody.