



Web: www.anbobio.com
www.dijibio.com
Order: order@dijibio.com
Tel: (86) 519 8805 0026

TUSC3 Antibody [#C10978]

Catalog Number: C10978

Concentration: 1mg/ml

Swiss-Prot No.: Q13454

Other Names: Protein N33, Tumor suppressor candidate 3, N33

Storage/Stability: Store at -20°C/1 year

Form of Antibody: Rabbit IgG in phosphate buffered saline (without Mg²⁺ and Ca²⁺), pH 7.4, 150mM NaCl, 0.02% sodium azide and 50% glycerol.

Immunogen: The antiserum was produced against synthesized peptide derived from internal of human TUSC3.

Purification: The antibody was affinity-purified from

rabbit antiserum by affinity-chromatography using epitope-specific immunogen.

Specificity: TUSC3 antibody detects endogenous levels of total TUSC3 protein.

Reactivity: Human, Mouse, Rat

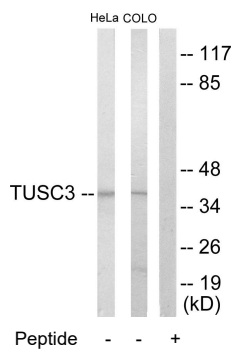
Applications: WB: 1:500~1:3000 IF: 1:100~1:500
ELISA: 1:10000

References:

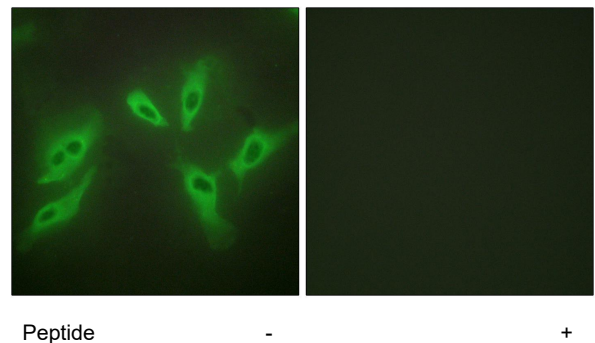
Macgrogan D., Genomics 35:55-65(1996).

The MGC Project Team, Genome Res. 14:2121-2127(2004).

Kelleher D.J., Mol. Cell 12:101-111(2003).



Western blot analysis of extracts from HeLa cells and COLO205 cells, using TUSC3 antibody.



Immunofluorescence analysis of HeLa cells, using TUSC3 antibody.