



**Web:** [www.anbio.com](http://www.anbio.com)  
[www.dijibio.com](http://www.dijibio.com)  
**Order:** [order@dijibio.com](mailto:order@dijibio.com)  
**Tel:** (86) 519 8805 0026

## MED21 Antibody [#C10986]

**Catalog Number:** C10986

**Concentration:** 1mg/ml

**Swiss-Prot No.:** Q13503

**Other Names:** Mediator of RNA polymerase II transcription subunit 21, Mediator complex subunit 21, RNA polymerase II holoenzyme component SRB7, RNAPII complex component SRB7, hSrb7, MED21, SRB7, SURB7

**Storage/Stability:** Store at -20°C/1 year

**Form of Antibody:** Rabbit IgG in phosphate buffered saline (without Mg<sup>2+</sup> and Ca<sup>2+</sup>), pH 7.4, 150mM NaCl, 0.02% sodium azide and 50% glycerol.

**Immunogen:** The antiserum was produced against synthesized peptide derived from internal of human

MED21.

**Purification:** The antibody was affinity-purified from rabbit antiserum by affinity-chromatography using epitope-specific immunogen.

**Specificity:** MED21 antibody detects endogenous levels of total MED21 protein.

**Reactivity:** Human (Identities = 100%, Positives = 100%);  
Mouse (Identities = 100%, Positives = 100%)

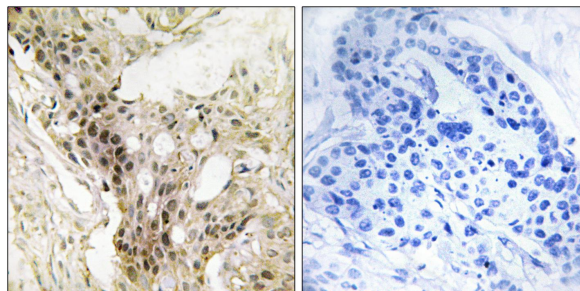
**Applications:** IHC: 1:50~1:100 ELISA: 1:5000

**References:**

Chao D.M., Nature 380:82-85(1996).

Maldonado E., Nature 381:86-89(1996).

Oelgeschlaeger T., Mol. Cell 1:925-931(1998).



Peptide

-

+

Immunohistochemistry analysis of paraffin-embedded human breast carcinoma tissue, using MED21 antibody.