



Web: [www.anbobio.com](http://www.anbobio.com)  
[www.dijibio.com](http://www.dijibio.com)  
Order: [order@dijibio.com](mailto:order@dijibio.com)  
Tel: (86) 519 8805 0026

## SERC3 Antibody [#C10988]

**Catalog Number:** C10988

**Concentration:** 1mg/ml

**Swiss-Prot No.:** Q13530

**Other Names:** Serine incorporator 3, Tumor differentially expressed protein 1, SERINC3, DIFF33, TDE1, SBBI99

**Storage/Stability:** Store at -20°C/1 year

**Form of Antibody:** Rabbit IgG in phosphate buffered saline (without Mg<sup>2+</sup> and Ca<sup>2+</sup>), pH 7.4, 150mM NaCl, 0.02% sodium azide and 50% glycerol.

**Immunogen:** The antiserum was produced against synthesized peptide derived from C-terminal of human SERC3.

**Purification:** The antibody was affinity-purified from

rabbit antiserum by affinity-chromatography using epitope-specific immunogen.

**Specificity:** SERC3 antibody detects endogenous levels of total SERC3 protein.

**Reactivity:** Human, Mouse, Rat

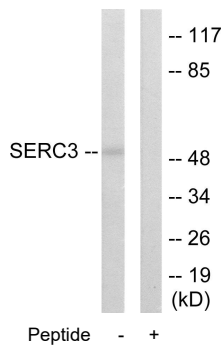
**Applications:** WB: 1:500~1:3000 IF: 1:100~1:500  
ELISA: 1:20000

**References:**

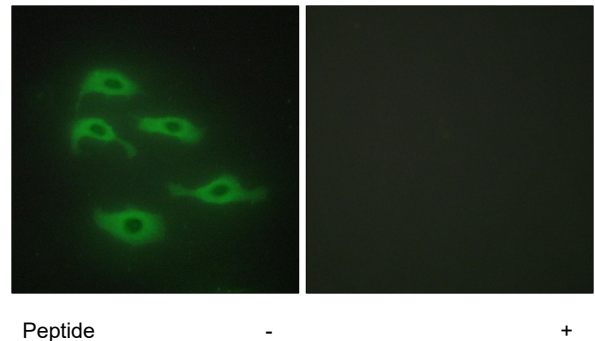
Bossolasco M., Mol. Carcinog. 26:189-200(1999).

Deloukas P., Nature 414:865-871(2001)..

The MGC Project Team, Genome Res. 14:2121-2127(2004).



Western blot analysis of extracts from 293 cells, using SERC3 antibody.



Immunofluorescence analysis of HepG2 cells, using SERC3 antibody.