



Web: www.anbobio.com
www.dijibio.com
Order: order@dijibio.com
Tel: (86) 519 8805 0026

CaMK2 β/γ Antibody [#C10992]

Catalog Number: C10992

Concentration: 1mg/ml

Swiss-Prot No.: Q13555/Q13554

Other Names: Calcium/calmodulin-dependent protein kinase type II gamma chain, EC 2.7.11.17, CaM-kinase II gamma chain, CaM kinase II subunit gamma, CaMK-II subunit gamma, CAMK2G, CAMKG

Storage/Stability: Store at -20°C/1 year

Form of Antibody: Rabbit IgG in phosphate buffered saline (without Mg²⁺ and Ca²⁺), pH 7.4, 150mM NaCl, 0.02% sodium azide and 50% glycerol.

Immunogen: The antiserum was produced against synthesized peptide derived from C-terminal of human CaMK2 β/γ .

Purification: The antibody was affinity-purified from rabbit antiserum by affinity-chromatography using epitope-specific immunogen.

Specificity: CaMK2 β/γ antibody detects endogenous levels of total CaMK2 β/γ protein.

Reactivity: Human, Mouse, Rat

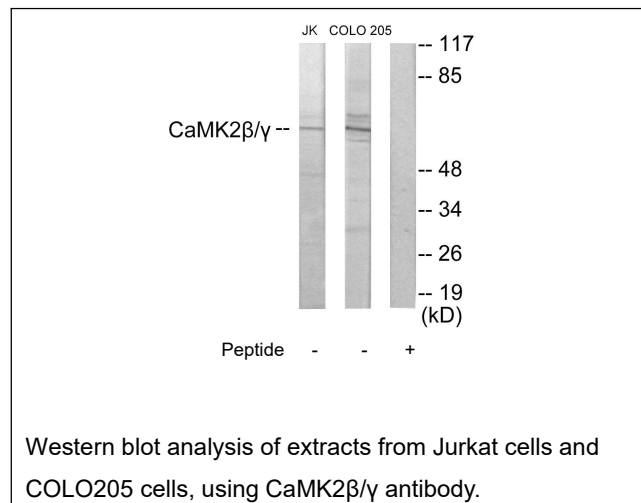
Applications: WB: 1:500~1:3000 ELISA: 1:20000

References:

Deloukas P., Nature 429:375-381(2004).

Breen M.A., Biochem. Biophys. Res. Commun. 236:473-478(1997).

Tombes R.M., Biochim. Biophys. Acta 1355:281-292(1997).



For Research Use Only