



Web: www.anbobio.com
www.dijibio.com
Order: order@dijibio.com
Tel: (86) 519 8805 0026

TRA-2 α Antibody [#C11000]

Catalog Number: C11000

Concentration: 1mg/ml

Swiss-Prot No.: Q13595

Other Names: Transformer-2 protein homolog, TRA-2 alpha

Storage/Stability: Store at -20°C/1 year

Form of Antibody: Rabbit IgG in phosphate buffered saline (without Mg²⁺ and Ca²⁺), pH 7.4, 150mM NaCl, 0.02% sodium azide and 50% glycerol.

Immunogen: The antiserum was produced against synthesized peptide derived from internal of human TRA-2 α .

Purification: The antibody was affinity-purified from

rabbit antiserum by affinity-chromatography using epitope-specific immunogen.

Specificity: TRA-2 α antibody detects endogenous levels of total TRA-2 α protein.

Reactivity: Human, Mouse

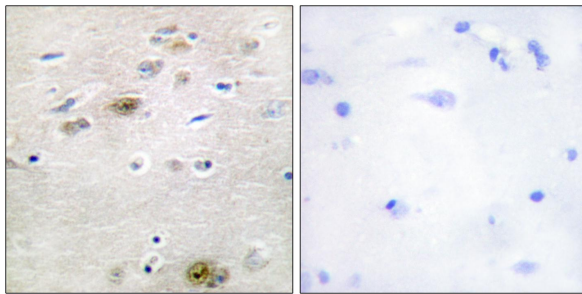
Applications: WB: 1:500~1:3000 IHC: 1:50~1:100
IF: 1:100~1:500 ELISA: 1:20000

References:

Dauwalder B., Proc. Natl. Acad. Sci. U.S.A. 93:9004-9009(1996).

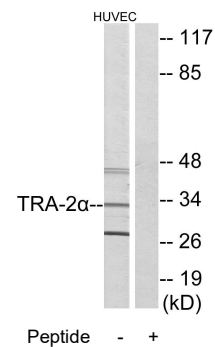
Tacke R., Cell 93:139-148(1998).

Gevaert K., Proteomics 5:3589-3599(2005).

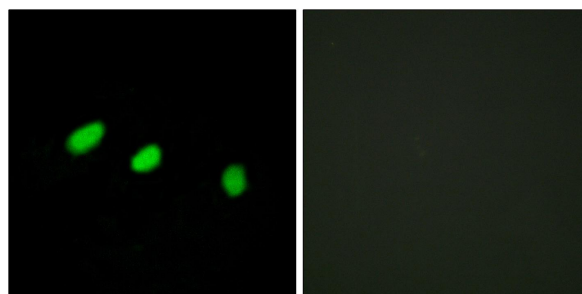


Peptide - +

Immunohistochemistry analysis of paraffin-embedded human brain tissue using TRA-2 α antibody.



Western blot analysis of extracts from HUVEC cells, using TRA-2 α antibody.



Peptide - +

Immunofluorescence analysis of HeLa cells, using TRA-2 α antibody.