



Web: [www.anbobio.com](http://www.anbobio.com)  
[www.dijibio.com](http://www.dijibio.com)  
Order: [order@dijibio.com](mailto:order@dijibio.com)  
Tel: (86) 519 8805 0026

## CBF $\beta$ Antibody [#C11013]

**Catalog Number:** C11013

**Concentration:** 1mg/ml

**Swiss-Prot No.:** Q13951

**Other Names:** Core-binding factor subunit beta, CBF-beta, Polyomavirus enhancer-binding protein 2 beta subunit, PEBP2-beta, PEA2-beta, SL3-3 enhancer factor 1 subunit beta, SL3/AKV core-binding factor beta subunit, CBFB

**Storage/Stability:** Store at -20°C/1 year

**Form of Antibody:** Rabbit IgG in phosphate buffered saline (without Mg<sup>2+</sup> and Ca<sup>2+</sup>), pH 7.4, 150mM NaCl, 0.02% sodium azide and 50% glycerol.

**Immunogen:** The antiserum was produced against synthesized peptide derived from internal of human CBF

$\beta$ .

**Purification:** The antibody was affinity-purified from rabbit antiserum by affinity-chromatography using epitope-specific immunogen.

**Specificity:** CBF  $\beta$  antibody detects endogenous levels of total CBF  $\beta$  protein.

**Reactivity:** Human, Mouse, Rat

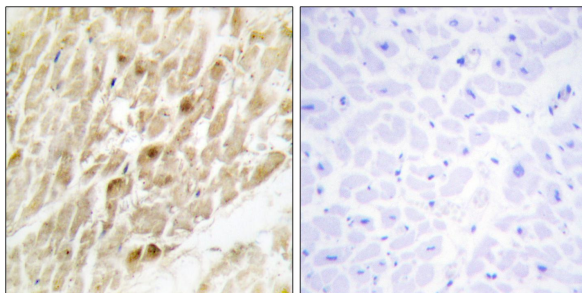
**Applications:** WB: 1:500~1:3000 IHC: 1:50~1:100  
ELISA: 1:20000

**References:**

Hajra A., Genomics 26:571-579(1995).

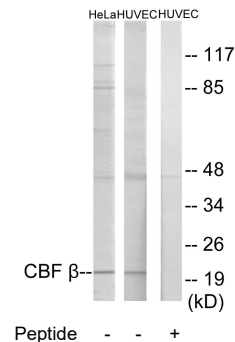
Liu P., Science 261:1041-1044(1993).

Warren A.J., EMBO J. 19:3004-3015(2000).



Peptide - +

Immunohistochemistry analysis of paraffin-embedded human heart tissue using CBF  $\beta$  antibody.



Peptide - - +

Western blot analysis of extracts from HeLa cells and HUVEC cells, using CBF  $\beta$  antibody.