



**Web:** [www.anbobio.com](http://www.anbobio.com)  
[www.dijibio.com](http://www.dijibio.com)  
**Order:** [order@dijibio.com](mailto:order@dijibio.com)  
**Tel:** (86) 519 8805 0026

## GAS6 Antibody [#C11029]

**Catalog Number:** C11029

**Concentration:** 1mg/ml

**Swiss-Prot No.:** Q14393

**Other Names:** GAS-6, AXL receptor, tyrosine kinase ligand

**Storage/Stability:** Store at -20°C/1 year

**Form of Antibody:** Rabbit IgG in phosphate buffered saline (without Mg<sup>2+</sup> and Ca<sup>2+</sup>), pH 7.4, 150mM NaCl, 0.02% sodium azide and 50% glycerol.

**Immunogen:** The antiserum was produced against synthesized peptide derived from internal of human GAS6.

**Purification:** The antibody was affinity-purified from rabbit antiserum by affinity-chromatography using epitope-specific immunogen.

**Specificity:** GAS6 antibody detects endogenous levels of total GAS6 protein.

**Reactivity:** Human

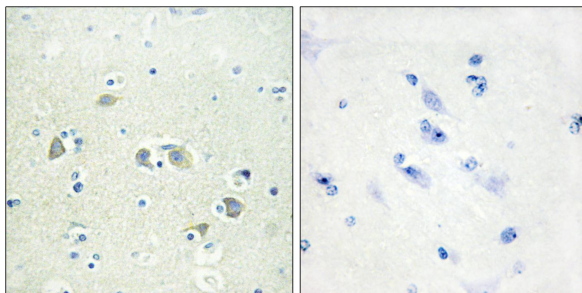
**Applications:** WB: 1:500~1:3000 IHC: 1:50~1:100  
ELISA: 1:40000

**References:**

Manfioletti G., Mol. Cell. Biol. 13:4976-4985(1993).

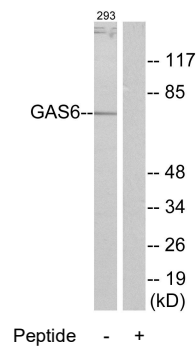
Ota T., Nat. Genet. 36:40-45(2004).

Varnum B.C., Nature 373:623-626(1995).



Peptide - +

Immunohistochemistry analysis of paraffin-embedded human brain tissue using GAS6 antibody.



Western blot analysis of extracts from 293 cells, using GAS6 antibody.