



Web: [www.anbobio.com](http://www.anbobio.com)  
[www.dijibio.com](http://www.dijibio.com)  
Order: [order@dijibio.com](mailto:order@dijibio.com)  
Tel: (86) 519 8805 0026

## CHD4 Antibody [#C11048]

**Catalog Number:** C11048

**Concentration:** 1mg/ml

**Swiss-Prot No.:** Q14839

**Other Names:** EC 3.6.1.-; ATP-dependent helicase CHD4;  
CHD-4; Mi-2 autoantigen 218 kDa protein; Mi2-beta

**Storage/Stability:** Store at -20°C/1 year

**Form of Antibody:** Rabbit IgG in phosphate buffered saline (without Mg<sup>2+</sup> and Ca<sup>2+</sup>), pH 7.4, 150mM NaCl, 0.02% sodium azide and 50% glycerol.

**Immunogen:** The antiserum was produced against synthesized peptide derived from internal of human CHD4.

**Purification:** The antibody was affinity-purified from

rabbit antiserum by affinity-chromatography using epitope-specific immunogen.

**Specificity:** CHD4 antibody detects endogenous levels of total CHD4 protein.

**Reactivity:** Human (Identities = 100%, Positives = 100%);  
Mouse (Identities = 100%, Positives = 100%)

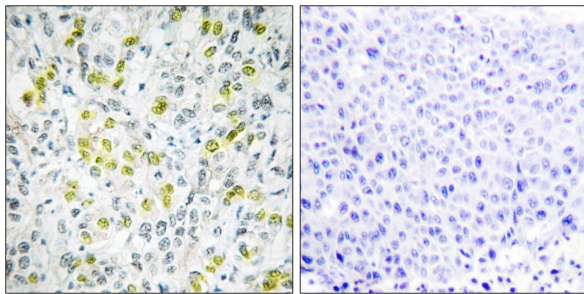
**Applications:** IHC: 1:50~1:100 IF: 1:100~1:500  
ELISA: 1:20000

**References:**

Seelig H.P., Arthritis Rheum. 38:1389-1399(1995).

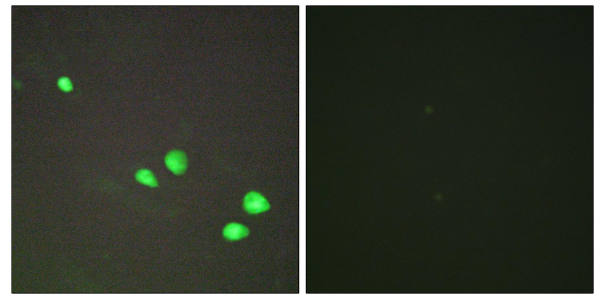
Schmidt D.R., Biochemistry 38:14711-14717(1999).

Shimono Y., J. Biol. Chem. 278:51638-51645(2003).



Peptide - +

Immunohistochemistry analysis of paraffin-embedded human liver carcinoma tissue, using CHD4 antibody.



Peptide - +

Immunofluorescence analysis of HepG2 cells, using CHD4 antibody.