



Web: www.anbobio.com
www.dijibio.com
Order: order@dijibio.com
Tel: (86) 519 8805 0026

ZNF638 Antibody [#C11052]

Catalog Number: C11052

Concentration: 1mg/ml

Swiss-Prot No.: Q14966

Other Names: Zinc finger protein 638, Nuclear protein 220, Zinc finger matrin-like protein, Cutaneous T-cell lymphoma-associated antigen se33-1, CTCL tumor antigen se33-1, ZNF638, NP220, ZFML

Storage/Stability: Store at -20°C/1 year

Form of Antibody: Rabbit IgG in phosphate buffered saline (without Mg²⁺ and Ca²⁺), pH 7.4, 150mM NaCl, 0.02% sodium azide and 50% glycerol.

Immunogen: The antiserum was produced against synthesized peptide derived from internal of human ZNF638.

Purification: The antibody was affinity-purified from rabbit antiserum by affinity-chromatography using epitope-specific immunogen.

Specificity: ZNF638 antibody detects endogenous levels of total ZNF638 protein.

Reactivity: Human

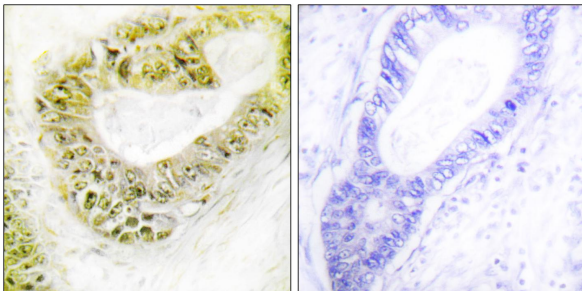
Applications: WB: 1:500~1:3000 IHC: 1:50~1:100
ELISA: 1:20000

References:

Inagaki H., J. Biol. Chem. 271:12525-12531(1996).

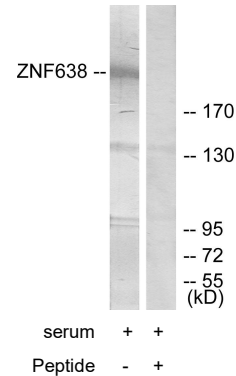
Eichmueller S., Proc. Natl. Acad. Sci. U.S.A. 98:629-634(2001).

Hillier L.W., Nature 434:724-731(2005).



Peptide - +

Immunohistochemistry analysis of paraffin-embedded human colon carcinoma tissue using ZNF638 antibody.



Western blot analysis of extracts from HepG2 cells, treated with serum (20%, 15mins), using ZNF638 antibody.