



**Web:** [www.anbobio.com](http://www.anbobio.com)  
[www.dijibio.com](http://www.dijibio.com)  
**Order:** [order@dijibio.com](mailto:order@dijibio.com)  
**Tel:** (86) 519 8805 0026

## ACV1B Antibody [#C10576]

**Catalog Number:** C10576

**Concentration:** 1mg/ml

**Swiss-Prot No.:** P36896

**Other Names:** ACTR-IB, ACV1B, ACVR1B, ACVRLK4, Activin receptor-like kinase 4, EC 2.7.1.37, EC 2.7.11.30, KIR2, SKR2, Serine/threonine-protein kinase receptor R2 precursor

**Storage/Stability:** Store at -20°C/1 year

**Form of Antibody:** Rabbit IgG in phosphate buffered saline (without Mg<sup>2+</sup> and Ca<sup>2+</sup>), pH 7.4, 150mM NaCl, 0.02% sodium azide and 50% glycerol.

**Immunogen:** The antiserum was produced against synthesized peptide derived from internal of human

ACV1B.

**Purification:** The antibody was affinity-purified from rabbit antiserum by affinity-chromatography using epitope-specific immunogen.

**Specificity:** ACV1B antibody detects endogenous levels of total ACV1B protein.

**Reactivity:** Human, Mouse, Rat

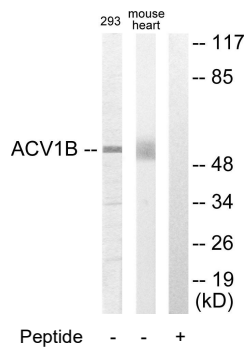
**Applications:** WB: 1:500~1:3000 IF: 1:100~1:500  
ELISA: 1:5000

**References:**

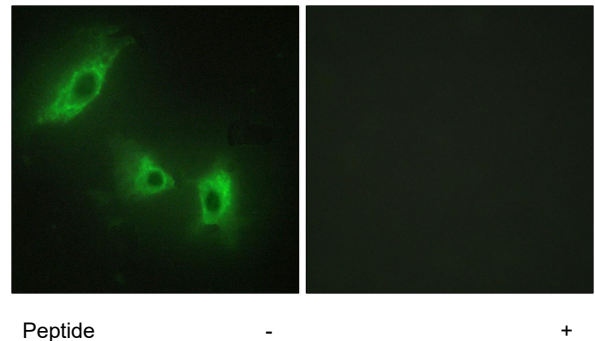
ten Dijke P., Oncogene 8:2879-2887(1993).

Carcamo J., Mol. Cell. Biol. 14:3810-3821(1994).

Xu J., Proc. Natl. Acad. Sci. U.S.A. 91:7957-7961(1994).



Western blot analysis of extracts from 293 cells and mouse liver cells, using ACV1B antibody.



Immunofluorescence analysis of HeLa cells, using ACV1B antibody.

**For Research Use Only**