



Web: www.anbobio.com
www.dijibio.com
Order: order@dijibio.com
Tel: (86) 519 8805 0026

LTBR Antibody [#C10577]

Catalog Number: C10577

Concentration: 1mg/ml

Swiss-Prot No.: P36941

Other Names: Tumor necrosis factor receptor superfamily member 3 [Precursor], Lymphotoxin-beta receptor, Tumor necrosis factor receptor 2-related protein, Tumor necrosis factor C receptor, LTBR, D12S370, TNFCR, TNFRSF3

Storage/Stability: Store at -20°C/1 year

Form of Antibody: Rabbit IgG in phosphate buffered saline (without Mg²⁺ and Ca²⁺), pH 7.4, 150mM NaCl, 0.02% sodium azide and 50% glycerol.

Immunogen: The antiserum was produced against

synthesized peptide derived from internal of human LTBR.

Purification: The antibody was affinity-purified from rabbit antiserum by affinity-chromatography using epitope-specific immunogen.

Specificity: LTBR antibody detects endogenous levels of total LTBR protein.

Reactivity: Human, Mouse

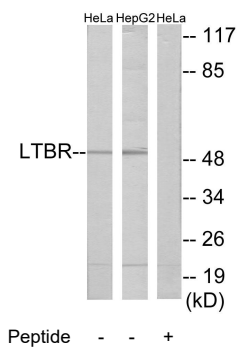
Applications: WB: 1:500~1:3000 IF: 1:100~1:500
ELISA: 1:40000

References:

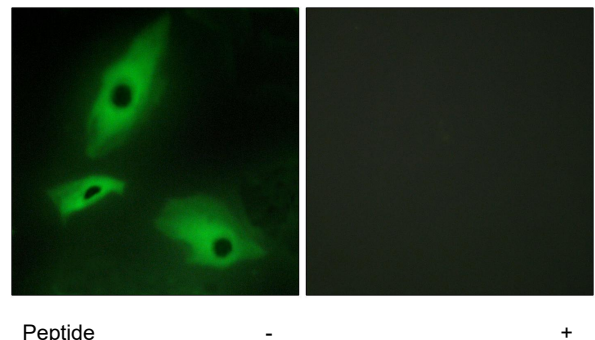
Baens M., Genomics 16:214-218(1993).

Crowe P.D., Science 264:707-710(1994).

Wu M.-Y., J. Biol. Chem. 274:11868-11873(1999).



Western blot analysis of extracts from HeLa cells and HepG2 cells, using LTBR antibody.



Immunofluorescence analysis of HeLa cells, using LTBR antibody.