



Web: www.anbobio.com
www.dijibio.com
Order: order@dijibio.com
Tel: (86) 519 8805 0026

ACVL1 Antibody [#C10579]

Catalog Number: C10579

Concentration: 1mg/ml

Swiss-Prot No.: P37023

Other Names: ACVL1, ACVRL1, ACVRLK1, ALK-1, Activin receptor-like kinase 1, EC 2.7.11.30, SKR3, TGF-B superfamily receptor type I, TSR-I, kinase ALK1

Storage/Stability: Store at -20°C/1 year

Form of Antibody: Rabbit IgG in phosphate buffered saline (without Mg²⁺ and Ca²⁺), pH 7.4, 150mM NaCl, 0.02% sodium azide and 50% glycerol.

Immunogen: The antiserum was produced against synthesized peptide derived from internal of human ACVL1.

Purification: The antibody was affinity-purified from rabbit antiserum by affinity-chromatography using epitope-specific immunogen.

Specificity: ACVL1 antibody detects endogenous levels of total ACVL1 protein.

Reactivity: Human, Mouse, Rat

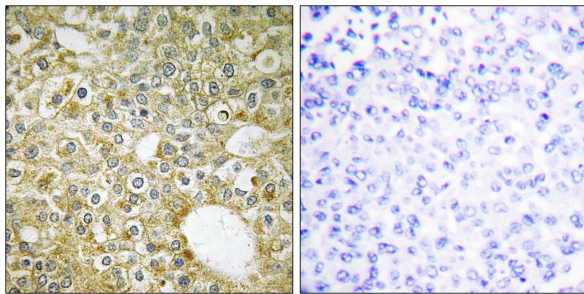
Applications: WB: 1:500~1:3000 IHC: 1:50~1:100
IF: 1:100~1:500 ELISA: 1:20000

References:

ten Dijke P., Oncogene 8:2879-2887(1993).

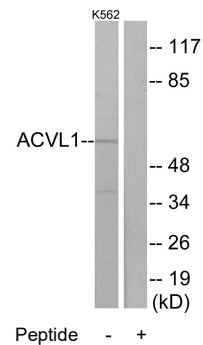
Attisano L., Cell 75:671-680(1993).

Berg J.N., Am. J. Hum. Genet. 61:60-67(1997).



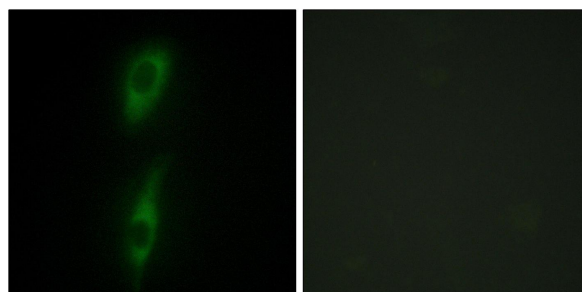
Peptide - +

Immunohistochemistry analysis of paraffin-embedded human breast carcinoma tissue using ACVL1 antibody.



Peptide - +

Western blot analysis of extracts from K562 cells, using ACVL1 antibody.



Peptide - +

Immunofluorescence analysis of HeLa cells, using ACVL1 antibody.