



Web: www.anbobio.com
www.dijibio.com
Order: order@dijibio.com
Tel: (86) 519 8805 0026

FEN1 Antibody [#C10585]

Catalog Number: C10585

Concentration: 1mg/ml

Swiss-Prot No.: P39748

Other Names: Flap endonuclease 1, EC 3.1.-., Flap structure-specific endonuclease 1, FEN-1, Maturation factor 1, MF1, hFEN-1, DNase IV, FEN1, RAD2

Storage/Stability: Store at -20°C/1 year

Form of Antibody: Rabbit IgG in phosphate buffered saline (without Mg²⁺ and Ca²⁺), pH 7.4, 150mM NaCl, 0.02% sodium azide and 50% glycerol.

Immunogen: The antiserum was produced against synthesized peptide derived from internal of human FEN1.

Purification: The antibody was affinity-purified from rabbit antiserum by affinity-chromatography using epitope-specific immunogen.

Specificity: FEN1 antibody detects endogenous levels of total FEN1 protein.

Reactivity: Human, Mouse, Rat

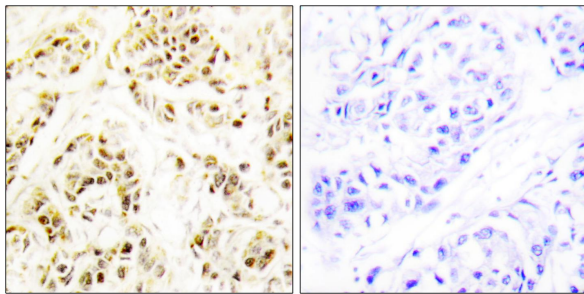
Applications: WB: 1:500~1:3000 IHC: 1:50~1:100
IF: 1:100~1:500 ELISA: 1:5000

References:

Murray J.M., Mol. Cell. Biol. 14:4878-4888(1994).

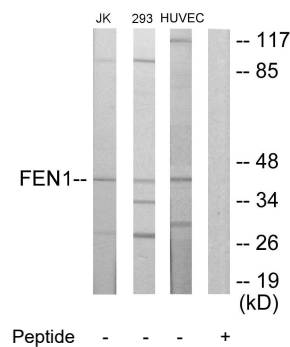
Hiraoka L.R., Genomics 25:220-225(1995).

Taylor T.D., Nature 440:497-500(2006).

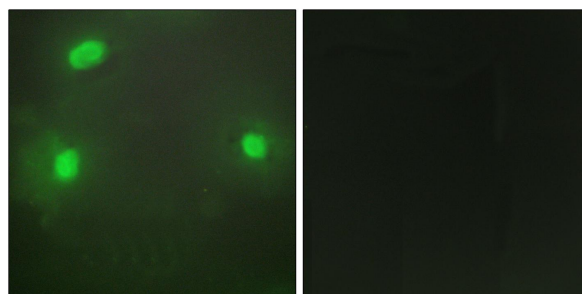


Peptide - +

Immunohistochemistry analysis of paraffin-embedded human breast carcinoma tissue using FEN1 antibody.



Western blot analysis of extracts from Jurkat cells, 293 cells and HUVEC cells, using FEN1 antibody.



Peptide - +

Immunofluorescence analysis of HeLa cells, using FEN1 antibody.

