



Web: www.anbobio.com
www.dijibio.com
Order: order@dijibio.com
Tel: (86) 519 8805 0026

GRK6 Antibody [#C10613]

Catalog Number: C10613

Concentration: 1mg/ml

Swiss-Prot No.: P43250

Other Names: EC 2.7.11.16, G-protein-coupled receptor kinase 6, GPRK6, kinase GRK6

Storage/Stability: Store at -20°C/1 year

Form of Antibody: Rabbit IgG in phosphate buffered saline (without Mg²⁺ and Ca²⁺), pH 7.4, 150mM NaCl, 0.02% sodium azide and 50% glycerol.

Immunogen: The antiserum was produced against synthesized peptide derived from N-terminal of human GRK6.

Purification: The antibody was affinity-purified from

rabbit antiserum by affinity-chromatography using epitope-specific immunogen.

Specificity: GRK6 antibody detects endogenous levels of total GRK6 protein.

Reactivity: Human, Mouse, Rat

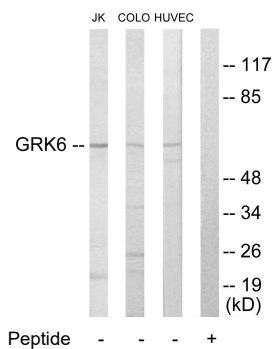
Applications: WB: 1:500~1:3000 IF: 1:100~1:500
ELISA: 1:10000

References:

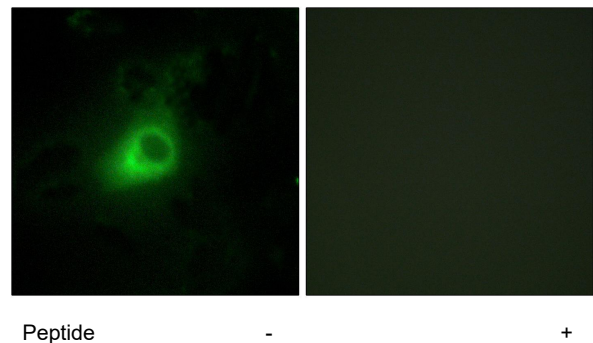
Benovic J.L., J. Biol. Chem. 268:19521-19527(1993).

Haribabu B., Proc. Natl. Acad. Sci. U.S.A. 90:9398-9402(1993).

Stoffel R.H., J. Biol. Chem. 269:27791-27794(1994).



Western blot analysis of extracts from Jurkat cells, COLO205 cells and HUVEC cells, using GRK6 antibody.



Immunofluorescence analysis of HeLa cells, using GRK6 antibody.