



Web: [www.anbobio.com](http://www.anbobio.com)  
[www.dijibio.com](http://www.dijibio.com)  
Order: [order@dijibio.com](mailto:order@dijibio.com)  
Tel: (86) 519 8805 0026

## ETV4 Antibody [#C10614]

**Catalog Number:** C10614

**Concentration:** 1mg/ml

**Swiss-Prot No.:** P43268

**Other Names:** ETS translocation variant 4, Adenovirus E1A enhancer-binding protein, E1A-F, ETV4, E1AF

**Storage/Stability:** Store at -20°C/1 year

**Form of Antibody:** Rabbit IgG in phosphate buffered saline (without Mg<sup>2+</sup> and Ca<sup>2+</sup>), pH 7.4, 150mM NaCl, 0.02% sodium azide and 50% glycerol.

**Immunogen:** The antiserum was produced against synthesized peptide derived from internal of human ETV4.

**Purification:** The antibody was affinity-purified from

rabbit antiserum by affinity-chromatography using epitope-specific immunogen.

**Specificity:** ETV4 antibody detects endogenous levels of total ETV4 protein.

**Reactivity:** Human (Identities = 100%, Positives = 100%);  
Mouse (Identities = 100%, Positives = 100%)

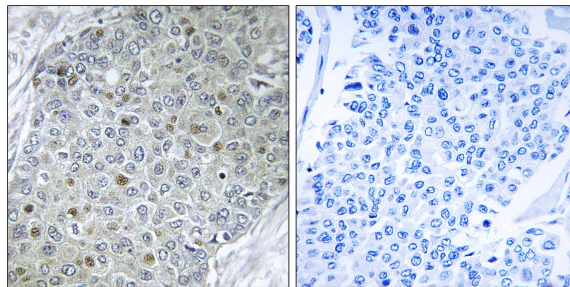
**Applications:** IHC: 1:50~1:100 ELISA: 1:20000

**References:**

Friedman L.S., Genomics 25:256-263(1995).

Coutte L., Gene 240:201-207(1999).

Higashino F., leic Acids Res. 21:547-553(1993).



Peptide

-

+

Immunohistochemistry analysis of paraffin-embedded human breast carcinoma tissue, using ETV4 antibody.