



Web: www.anbobio.com
www.dijibio.com
Order: order@dijibio.com
Tel: (86) 519 8805 0026

KPB1/2 Antibody [#C10626]

Catalog Number: C10626

Concentration: 1mg/ml

Swiss-Prot No.: P46020

Other Names: KPB1, PHKA, Phosphorylase B kinase alpha regulatory chain, skeletal muscle isoform, Phosphorylase kinase alpha M subunit, kinase PHKA1

Storage/Stability: Store at -20°C/1 year

Form of Antibody: Rabbit IgG in phosphate buffered saline (without Mg²⁺ and Ca²⁺), pH 7.4, 150mM NaCl, 0.02% sodium azide and 50% glycerol.

Immunogen: The antiserum was produced against synthesized peptide derived from internal of human KPB1/2.

Purification: The antibody was affinity-purified from rabbit antiserum by affinity-chromatography using epitope-specific immunogen.

Specificity: KPB1/2 antibody detects endogenous levels of total KPB1/2 protein.

Reactivity: Human, Mouse, Rat

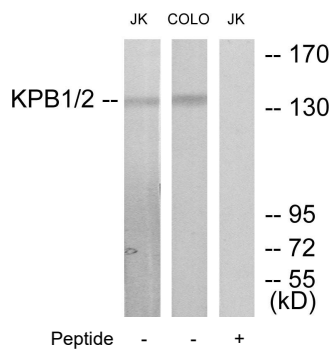
Applications: WB: 1:500~1:3000 IF: 1:100~1:500
ELISA: 1:20000

References:

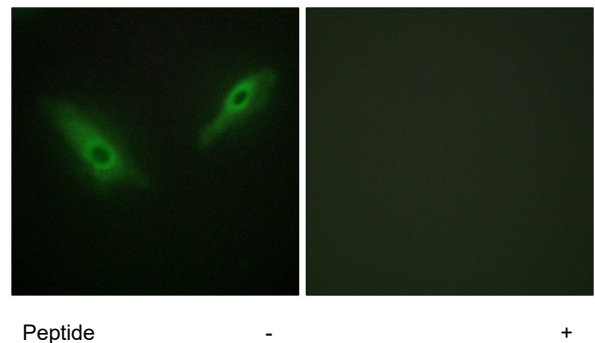
Wuellrich A., J. Biol. Chem. 268:23208-23214(1993).

The MGC Project Team, Genome Res. 14:2121-2127(2004).

Burwinkel B., Eur. J. Hum. Genet. 11:516-526(2003).



Western blot analysis of extracts from Jurkat cells and COLO205 cells, using KPB1/2 antibody.



Immunofluorescence analysis of HeLa cells, using KPB1/2 antibody.