



Web: www.anbobio.com

www.dijibio.com

Order: order@dijibio.com

Tel: (86) 519 8805 0026

CKI- α Antibody [#C10638]

Catalog Number: C10638

Concentration: 1mg/ml

Swiss-Prot No.: P48729

Other Names: CK1-alpha, CKI-alpha, CSNK1A1, Casein kinase I, alpha isoform, EC 2.7.11.1, KC1A, kinase CK1-alpha

Storage/Stability: Store at -20°C/1 year

Form of Antibody: Rabbit IgG in phosphate buffered saline (without Mg²⁺ and Ca²⁺), pH 7.4, 150mM NaCl, 0.02% sodium azide and 50% glycerol.

Immunogen: The antiserum was produced against synthesized peptide derived from internal of human CKI- α .

Purification: The antibody was affinity-purified from rabbit antiserum by affinity-chromatography using epitope-specific immunogen.

Specificity: CKI- α antibody detects endogenous levels of total CKI- α protein.

Reactivity: Human, Mouse, Rat

Applications: WB: 1:500~1:3000 IHC: 1:50~1:100

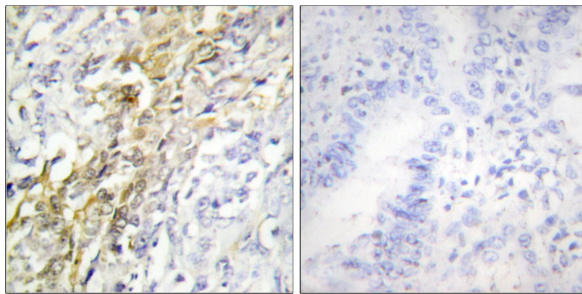
IF: 1:100~1:500 ELISA: 1:20000

References:

Tapia C., FEBS Lett. 349:307-312(1994).

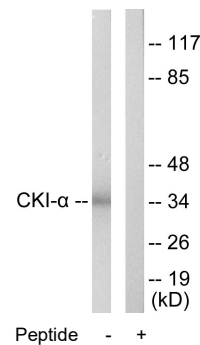
Fish K.J., J. Biol. Chem. 270:14875-14883(1995).

Liu C., Cell 108:837-847(2002).

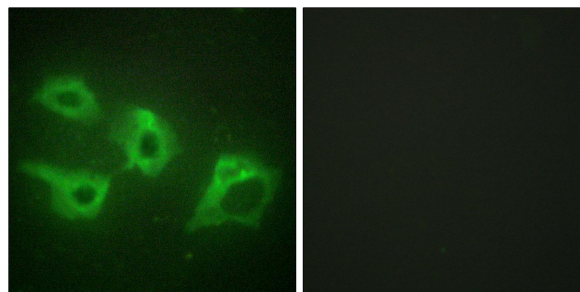


Peptide - +

Immunohistochemistry analysis of paraffin-embedded human lung carcinoma tissue using CKI- α antibody.



Western blot analysis of extracts from HeLa cells, using CKI- α antibody.



Peptide - +

Immunofluorescence analysis of HeLa cells, using CKI- α antibody.

