



Web: www.anbobio.com
www.dijibio.com
Order: order@dijibio.com
Tel: (86) 519 8805 0026

CLK1 Antibody [#C10651]

Catalog Number: C10651

Concentration: 1mg/ml

Swiss-Prot No.: P49759

Other Names: CDC like kinase 1, CLK, CLK1, Dual specificity protein kinase CLK1, EC 2.7.1.112, EC 2.7.12.1

Storage/Stability: Store at -20°C/1 year

Form of Antibody: Rabbit IgG in phosphate buffered saline (without Mg²⁺ and Ca²⁺), pH 7.4, 150mM NaCl, 0.02% sodium azide and 50% glycerol.

Immunogen: The antiserum was produced against synthesized peptide derived from internal of human CLK1.

Purification: The antibody was affinity-purified from

rabbit antiserum by affinity-chromatography using epitope-specific immunogen.

Specificity: CLK1 antibody detects endogenous levels of total CLK1 protein.

Reactivity: Human, Mouse

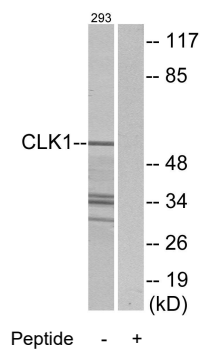
Applications: WB: 1:500~1:3000 IF: 1:100~1:500
ELISA: 1:1000

References:

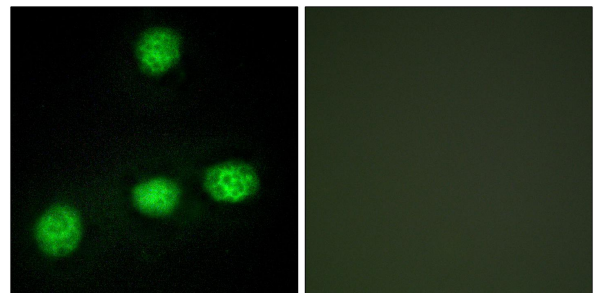
Johnson K.W., J. Biol. Chem. 266:3402-3407(1991).

Hanes J.J., J. Mol. Biol. 244:665-672(1994).

Olsen J.V., Cell 127:635-648(2006).



Western blot analysis of extracts from 293 cells, using CLK1 antibody.



Immunofluorescence analysis of HUVEC cells, using CLK1 antibody.

For Research Use Only