



Web: [www.anbobio.com](http://www.anbobio.com)

[www.dijibio.com](http://www.dijibio.com)

Order: [order@dijibio.com](mailto:order@dijibio.com)

Tel: (86) 519 8805 0026

## HINT1 Antibody [#C10655]

**Catalog Number:** C10655

**Concentration:** 1mg/ml

**Swiss-Prot No.:** P49773

**Other Names:** adenosine 5'-monophosphoramidase; EC 3.-.-.; histidine triad nucleotide-binding 1; PKCI-1; PKCI1; PRKCNH1; protein kinase C inhibitor 1; protein kinase C-interacting 1

**Storage/Stability:** Store at -20°C/1 year

**Form of Antibody:** Rabbit IgG in phosphate buffered saline (without Mg<sup>2+</sup> and Ca<sup>2+</sup>), pH 7.4, 150mM NaCl, 0.02% sodium azide and 50% glycerol.

**Immunogen:** The antiserum was produced against synthesized peptide derived from internal of human HINT1.

**Purification:** The antibody was affinity-purified from rabbit antiserum by affinity-chromatography using epitope-specific immunogen.

**Specificity:** HINT1 antibody detects endogenous levels of total HINT1 protein.

**Reactivity:** Human, Mouse, Rat

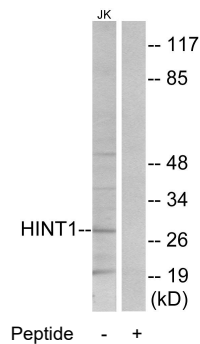
**Applications:** WB: 1:500~1:3000 IF: 1:100~1:500  
ELISA: 1:20000

**References:**

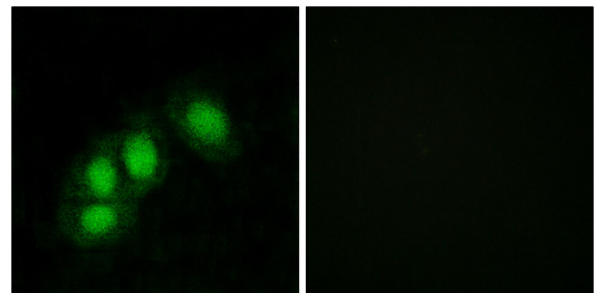
Brzoska P.M., Genomics 36:151-156(1996).

Brzoska P.M., Proc. Natl. Acad. Sci. U.S.A. 92:7824-7828(1995).

Ota T., Nat. Genet. 36:40-45(2004).



Western blot analysis of extracts from Jurkat cells, using HINT1 antibody.



Immunofluorescence analysis of HeLa cells, using HINT1 antibody.