



Web: www.anbobio.com
www.dijibio.com
Order: order@dijibio.com
Tel: (86) 519 8805 0026

ERF Antibody [#C10666]

Catalog Number: C10666

Concentration: 1mg/ml

Swiss-Prot No.: P50548

Other Names: ETS-domain transcription factor ERF, Ets2 repressor factor

Storage/Stability: Store at -20°C/1 year

Form of Antibody: Rabbit IgG in phosphate buffered saline (without Mg²⁺ and Ca²⁺), pH 7.4, 150mM NaCl, 0.02% sodium azide and 50% glycerol.

Immunogen: The antiserum was produced against synthesized peptide derived from internal of human ERF.

Purification: The antibody was affinity-purified from

rabbit antiserum by affinity-chromatography using epitope-specific immunogen.

Specificity: ERF antibody detects endogenous levels of total ERF protein.

Reactivity: Human (Identities = 100%, Positives = 100%);
Mouse (Identities = 100%, Positives = 100%)

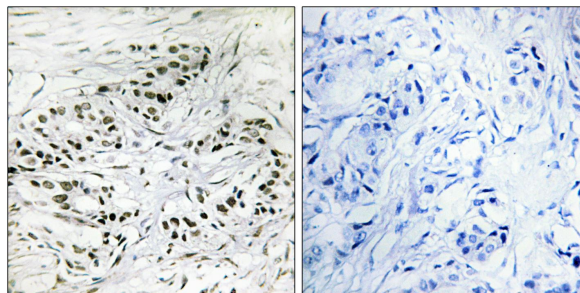
Applications: IHC: 1:50~1:100 ELISA: 1:40000

References:

Sgouras D.N., EMBO J. 14:4781-4793(1995).

Grimwood J., Nature 428:529-535(2004).

Olsen J.V., Cell 127:635-648(2006).



Peptide

-

+

Immunohistochemistry analysis of paraffin-embedded human breast carcinoma tissue, using ERF antibody.