



Web: [www.anbobio.com](http://www.anbobio.com)

[www.dijibio.com](http://www.dijibio.com)

Order: [order@dijibio.com](mailto:order@dijibio.com)

Tel: (86) 519 8805 0026

## FXR2 Antibody [#C10675]

**Catalog Number:** C10675

**Concentration:** 1mg/ml

**Swiss-Prot No.:** P51116

**Other Names:** Fragile X mental, retardation syndrome, related protein 2

**Storage/Stability:** Store at -20°C/1 year

**Form of Antibody:** Rabbit IgG in phosphate buffered saline (without Mg<sup>2+</sup> and Ca<sup>2+</sup>), pH 7.4, 150mM NaCl, 0.02% sodium azide and 50% glycerol.

**Immunogen:** The antiserum was produced against synthesized peptide derived from internal of human FXR2.

**Purification:** The antibody was affinity-purified from rabbit antiserum by affinity-chromatography using epitope-specific immunogen.

**Specificity:** FXR2 antibody detects endogenous levels of total FXR2 protein.

**Reactivity:** Human, Mouse

**Applications:** WB: 1:500~1:3000 IHC: 1:50~1:100

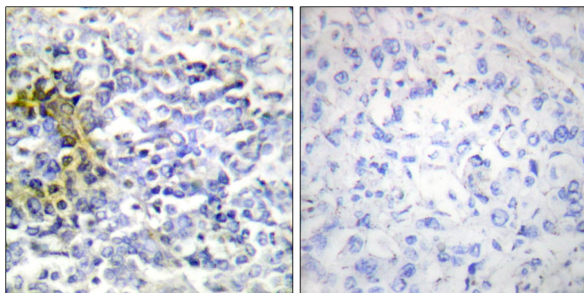
IF: 1:100~1:500 ELISA: 1:10000

**References:**

Wiley S.R., Immunity 3:673-682(1995).

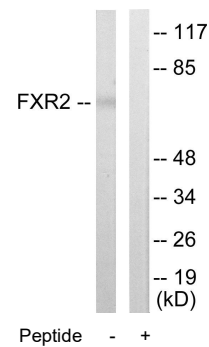
Pitti R.M., J. Biol. Chem. 271:12687-12690(1996).

Hymowitz S.G., Mol. Cell 4:563-571(1999).

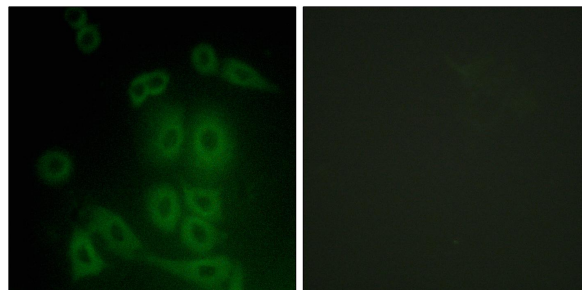


Peptide - +

Immunohistochemistry analysis of paraffin-embedded human lung carcinoma tissue using FXR2 antibody.



Western blot analysis of extracts from COLO205 cells, using FXR2 antibody.



Peptide - +

Immunofluorescence analysis of A549 cells, using FXR2 antibody.