



Web: www.anbobio.com
www.dijibio.com
Order: order@dijibio.com
Tel: (86) 519 8805 0026

BMX Antibody [#C10688]

Catalog Number: C10688

Concentration: 1mg/ml

Swiss-Prot No.: P51813

Other Names: BMX, BMX NON-receptor tyrosine kinase, Bone marrow kinase BMX, Cytoplasmic BMX, EC 2.7.10.2, Epithelial and endothelial tyrosine kinase, NTK38, Protein tyrosine kinase BMX, kinase Etk

Storage/Stability: Store at -20°C/1 year

Form of Antibody: Rabbit IgG in phosphate buffered saline (without Mg²⁺ and Ca²⁺), pH 7.4, 150mM NaCl, 0.02% sodium azide and 50% glycerol.

Immunogen: The antiserum was produced against synthesized peptide derived from N-terminal of human BMX.

Purification: The antibody was affinity-purified from rabbit antiserum by affinity-chromatography using epitope-specific immunogen.

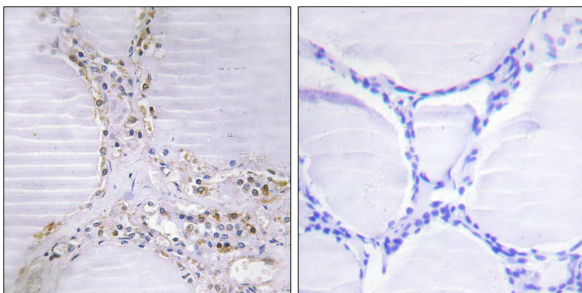
Specificity: BMX antibody detects endogenous levels of total BMX protein.

Reactivity: Human, Mouse

Applications: WB: 1:500~1:3000 IHC: 1:50~1:100
IF: 1:100~1:500 ELISA: 1:20000

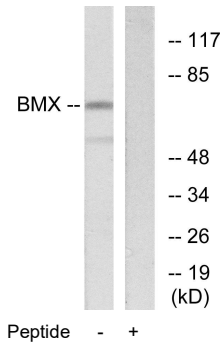
References:

Tamagnone L., *Oncogene* 9:3683-3688(1994).
Qiu Y., *Proc. Natl. Acad. Sci. U.S.A.* 95:3644-3649(1998).
Fuortes M., Thesis (1994), Cornell University, United States.



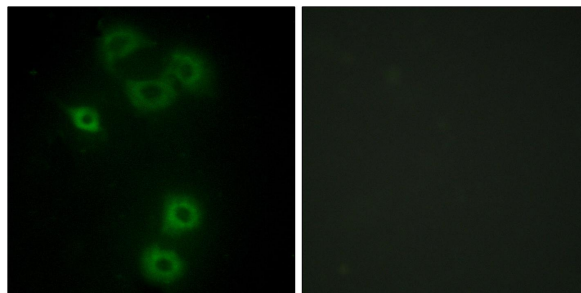
Peptide - +

Immunohistochemistry analysis of paraffin-embedded human thyroid gland tissue using BMX antibody.



Peptide - +

Western blot analysis of extracts from COS-7 cells, using BMX antibody.



Peptide - +

Immunofluorescence analysis of A549 cells, using BMX antibody.

