



Web: www.anbobio.com
www.dijibio.com
Order: order@dijibio.com
Tel: (86) 519 8805 0026

STEAP4 Antibody [#C11207]

Catalog Number: C11207

Concentration: 1mg/ml

Swiss-Prot No.: Q687X5

Other Names: EC 1.16.1.-; Six-transmembrane epithelial antigen of prostate 4; SixTransMembrane protein of prostate 2; Tumor necrosis factor, alpha-induced protein 9

Storage/Stability: Store at -20°C/1 year

Form of Antibody: Rabbit IgG in phosphate buffered saline (without Mg²⁺ and Ca²⁺), pH 7.4, 150mM NaCl, 0.02% sodium azide and 50% glycerol.

Immunogen: The antiserum was produced against synthesized peptide derived from internal of human STEAP4.

Purification: The antibody was affinity-purified from rabbit antiserum by affinity-chromatography using epitope-specific immunogen.

Specificity: STEAP4 antibody detects endogenous levels of total STEAP4 protein.

Reactivity: Human (Identities = 100%, Positives = 100%)

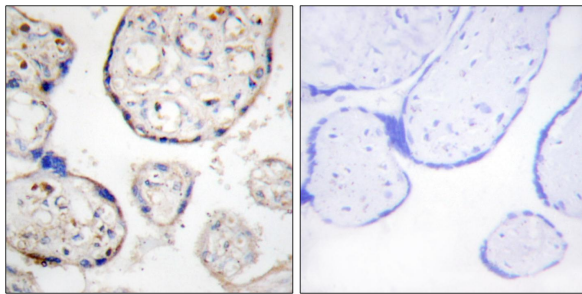
Applications: IHC: 1:50~1:100 IF: 1:100~1:500
ELISA: 1:20000

References:

Korkmaz C.G., Oncogene 24:4934-4945(2005).

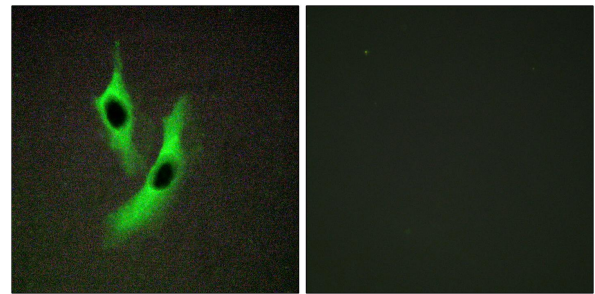
Ota T., Nat. Genet. 36:40-45(2004).

Ohgami R.S., Nat. Genet. 37:1264-1269(2005).



Peptide - +

Immunohistochemistry analysis of paraffin-embedded human placenta tissue, using STEAP4 antibody.



Peptide - +

Immunofluorescence analysis of Jurkat cells, using STEAP4 antibody.