



Web: www.anbobio.com
www.dijibio.com
Order: order@dijibio.com
Tel: (86) 519 8805 0026

DOK6 Antibody [#C11230]

Catalog Number: C11230

Concentration: 1mg/ml

Swiss-Prot No.: Q6PKX4

Other Names: Downstream of tyrosine kinase 6, Docking protein 6, DOK6, DOK5L

Storage/Stability: Store at -20°C/1 year

Form of Antibody: Rabbit IgG in phosphate buffered saline (without Mg²⁺ and Ca²⁺), pH 7.4, 150mM NaCl, 0.02% sodium azide and 50% glycerol.

Immunogen: The antiserum was produced against synthesized peptide derived from internal of human DOK6.

Purification: The antibody was affinity-purified from

rabbit antiserum by affinity-chromatography using epitope-specific immunogen.

Specificity: DOK6 antibody detects endogenous levels of total DOK6 protein.

Reactivity: Human, Mouse

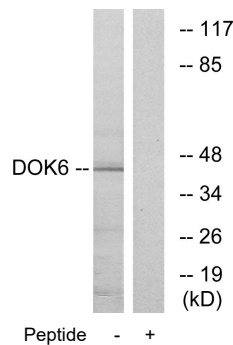
Applications: WB: 1:500~1:3000 IF: 1:100~1:500
ELISA: 1:10000

References:

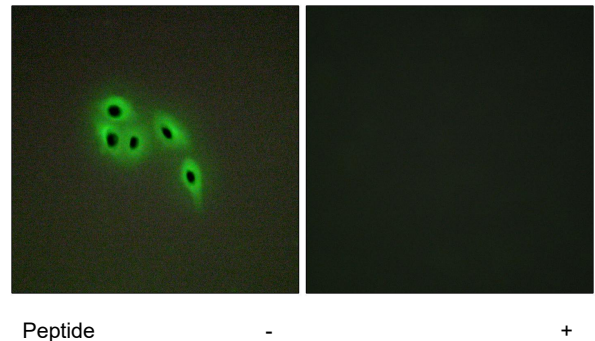
Crowder R.J., J. Biol. Chem. 279:42072-42081(2004).

The MGC Project Team, Genome Res. 14:2121-2127(2004).

Ota T., Nat. Genet. 36:40-45(2004).



Western blot analysis of extracts from COLO cells, using DOK6 antibody.



Immunofluorescence analysis of A549 cells, using DOK6 antibody.