



Web: www.anbobio.com
www.dijibio.com
Order: order@dijibio.com
Tel: (86) 519 8805 0026

KSR2 Antibody [#C11236]

Catalog Number: C11236

Concentration: 1mg/ml

Swiss-Prot No.: Q6VAB6

Other Names: hKSR2, Kinase suppressor of Ras 2, KSR2

Storage/Stability: Store at -20°C/1 year

Form of Antibody: Rabbit IgG in phosphate buffered saline (without Mg²⁺ and Ca²⁺), pH 7.4, 150mM NaCl, 0.02% sodium azide and 50% glycerol.

Immunogen: The antiserum was produced against synthesized peptide derived from internal of human KSR2.

Purification: The antibody was affinity-purified from

rabbit antiserum by affinity-chromatography using epitope-specific immunogen.

Specificity: KSR2 antibody detects endogenous levels of total KSR2 protein.

Reactivity: Human, Mouse

Applications: WB: 1:500~1:3000 IF: 1:100~1:500

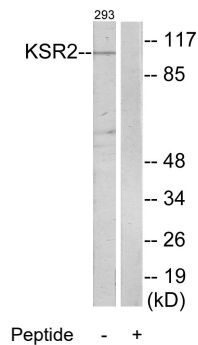
ELISA: 1:40000

References:

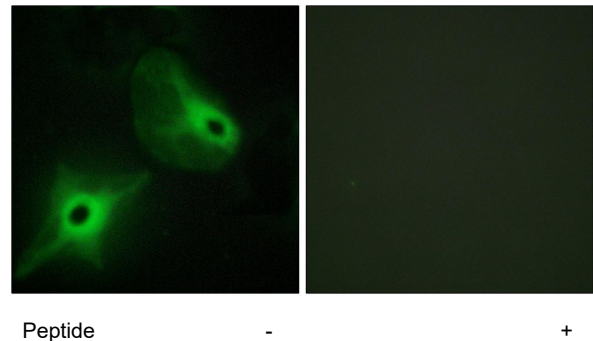
Ota T., Nat. Genet. 36:40-45(2004).

Scherer S.E., Nature 440:346-351(2006).

Channavajhala P.L., J. Biol. Chem. 278:47089-47097(2003).



Western blot analysis of extracts from 293 cells, using KSR2 antibody.



Immunofluorescence analysis of HeLa cells, using KSR2 antibody.