



Web: [www.anbobio.com](http://www.anbobio.com)  
[www.dijibio.com](http://www.dijibio.com)  
Order: [order@dijibio.com](mailto:order@dijibio.com)  
Tel: (86) 519 8805 0026

## MARK2 Antibody [#C11249]

**Catalog Number:** C11249

**Concentration:** 1mg/ml

**Swiss-Prot No.:** Q7KZI7

**Other Names:** EC 2.7.11.1, ELKL motif kinase 1, EMK, EMK1, MAP/microtubule affinity-regulating kinase 2, PAR-1, PAR-1b, kinase MARK2

**Storage/Stability:** Store at -20°C/1 year

**Form of Antibody:** Rabbit IgG in phosphate buffered saline (without Mg<sup>2+</sup> and Ca<sup>2+</sup>), pH 7.4, 150mM NaCl, 0.02% sodium azide and 50% glycerol.

**Immunogen:** The antiserum was produced against synthesized peptide derived from N-terminal of human MARK2.

**Purification:** The antibody was affinity-purified from rabbit antiserum by affinity-chromatography using epitope-specific immunogen.

**Specificity:** MARK2 antibody detects endogenous levels of total MARK2 protein.

**Reactivity:** Human, Mouse, Rat

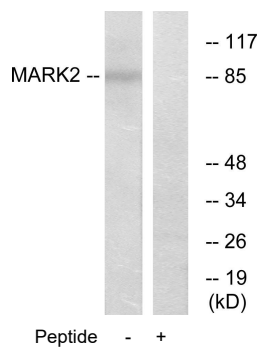
**Applications:** WB: 1:500~1:3000 IF: 1:100~1:500  
ELISA: 1:20000

**References:**

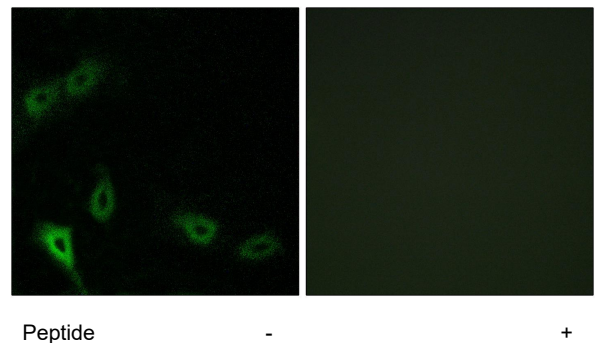
Espinosa L., Cytogenet. Cell Genet. 81:278-282(1998).

Lizcano J.M., EMBO J. 23:833-843(2004).

Taylor T.D., Nature 440:497-500(2006).



Western blot analysis of extracts from COS-7 cells, using MARK2 antibody.



Immunofluorescence analysis of A549 cells, using MARK2 antibody.