



**Web:** [www.anbobio.com](http://www.anbobio.com)  
[www.dijibio.com](http://www.dijibio.com)  
**Order:** [order@dijibio.com](mailto:order@dijibio.com)  
**Tel:** (86) 519 8805 0026

## ALPK2 Antibody [#C11273]

**Catalog Number:** C11273

**Concentration:** 1mg/ml

**Swiss-Prot No.:** Q86TB3

**Other Names:** Alpha-protein kinase 2, EC 2.7.11.-, Heart alpha-protein kinase, ALPK2, HAK

**Storage/Stability:** Store at -20°C/1 year

**Form of Antibody:** Rabbit IgG in phosphate buffered saline (without Mg<sup>2+</sup> and Ca<sup>2+</sup>), pH 7.4, 150mM NaCl, 0.02% sodium azide and 50% glycerol.

**Immunogen:** The antiserum was produced against synthesized peptide derived from internal of human ALPK2.

**Purification:** The antibody was affinity-purified from rabbit antiserum by affinity-chromatography using epitope-specific immunogen.

**Specificity:** ALPK2 antibody detects endogenous levels of total ALPK2 protein.

**Reactivity:** Human (Identities = 100%, Positives = 100%)

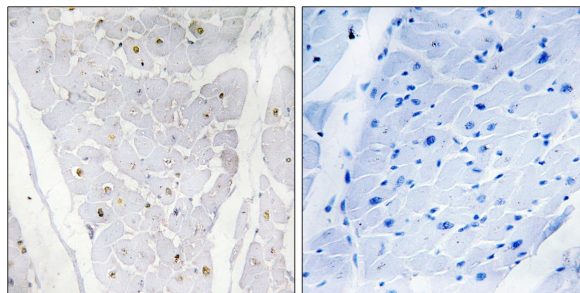
**Applications:** IHC: 1:50~1:100 ELISA: 1:40000

**References:**

Ota T., Nat. Genet. 36:40-45(2004).

The German cDNA consortium, Submitted (JUN-2003) to the EMBL/GenBank/DDBJ databases.

Ryazanov A.G., Curr. Biol. 9:R43-R45(1999).



Peptide

-

+

Immunohistochemistry analysis of paraffin-embedded human heart tissue, using ALPK2 antibody.