



**Web:** [www.anbobio.com](http://www.anbobio.com)  
[www.dijibio.com](http://www.dijibio.com)  
**Order:** [order@dijibio.com](mailto:order@dijibio.com)  
**Tel:** (86) 519 8805 0026

## DGKH Antibody [#C11290]

**Catalog Number:** C11290

**Concentration:** 1mg/ml

**Swiss-Prot No.:** Q86XP1

**Other Names:** Diacylglycerol kinase eta, EC 2.7.1.107, Diglyceride kinase eta, DGK-eta, DAG kinase eta, DGKH

**Storage/Stability:** Store at -20°C/1 year

**Form of Antibody:** Rabbit IgG in phosphate buffered saline (without Mg<sup>2+</sup> and Ca<sup>2+</sup>), pH 7.4, 150mM NaCl, 0.02% sodium azide and 50% glycerol.

**Immunogen:** The antiserum was produced against synthesized peptide derived from internal of human DGKH.

**Purification:** The antibody was affinity-purified from

rabbit antiserum by affinity-chromatography using epitope-specific immunogen.

**Specificity:** DGKH antibody detects endogenous levels of total DGKH protein.

**Reactivity:** Human (Identities = 100%, Positives = 100%);  
Mouse (Identities = 100%, Positives = 100%)

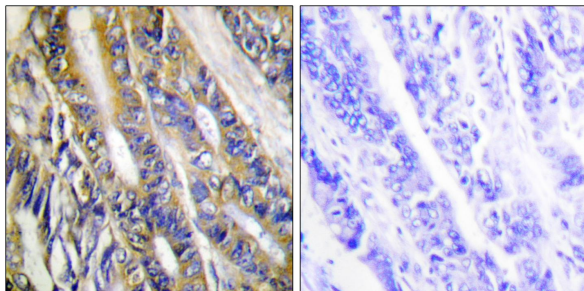
**Applications:** IHC: 1:50~1:100 IF: 1:100~1:500  
ELISA: 1:5000

**References:**

Murakami T., J. Biol. Chem. 278:34364-34372(2003).

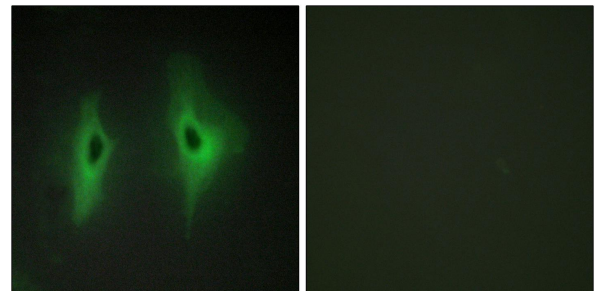
Dunham A., Nature 428:522-528(2004).

Ota T., Nat. Genet. 36:40-45(2004).



Peptide - +

Immunohistochemistry analysis of paraffin-embedded human colon carcinoma tissue, using DGKH antibody.



Peptide - +

Immunofluorescence analysis of HeLa cells, using DGKH antibody.