



**Web:** [www.anbobio.com](http://www.anbobio.com)  
[www.dijibio.com](http://www.dijibio.com)  
**Order:** [order@dijibio.com](mailto:order@dijibio.com)  
**Tel:** (86) 519 8805 0026

## LATH Antibody [#C11293]

**Catalog Number:** C11293

**Concentration:** 1mg/ml

**Swiss-Prot No.:** Q86YQ2

**Other Names:** Latherin , Breast cancer and salivary gland-expressed protein, LATH, BASE

**Storage/Stability:** Store at -20°C/1 year

**Form of Antibody:** Rabbit IgG in phosphate buffered saline (without Mg<sup>2+</sup> and Ca<sup>2+</sup>), pH 7.4, 150mM NaCl, 0.02% sodium azide and 50% glycerol.

**Immunogen:** The antiserum was produced against synthesized peptide derived from internal of human LATH.

**Purification:** The antibody was affinity-purified from rabbit antiserum by affinity-chromatography using

epitope-specific immunogen.

**Specificity:** LATH antibody detects endogenous levels of total LATH protein.

**Reactivity:** Human (Identities = 100%, Positives = 100%)

**Applications:** IHC: 1:50~1:100 IF: 1:100~1:500

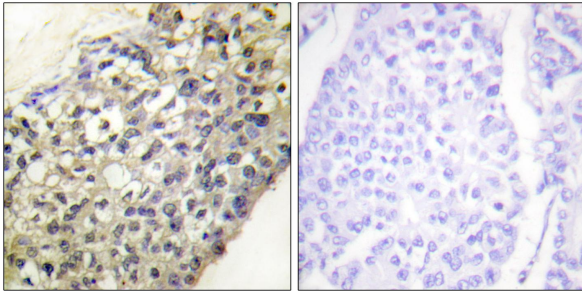
ELISA: 1:42000

**References:**

Egland K.A., Proc. Natl. Acad. Sci. U.S.A. 100:1099-1104(2003).

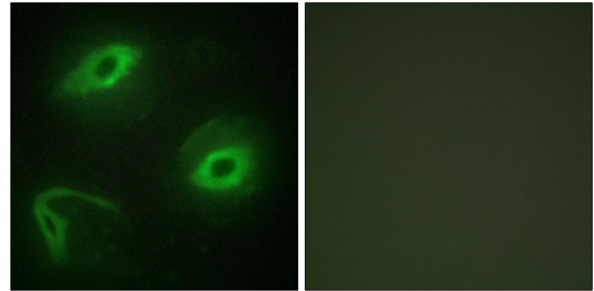
Deloukas P., Nature 414:865-871(2001).

The MGC Project Team, Genome Res. 14:2121-2127(2004).



Peptide - +

Immunohistochemistry analysis of paraffin-embedded human breast carcinoma tissue, using LATH antibody.



Peptide - +

Immunofluorescence analysis of HeLa cells, using LATH antibody.