



Web: [www.anbobio.com](http://www.anbobio.com)  
[www.dijibio.com](http://www.dijibio.com)  
Order: [order@dijibio.com](mailto:order@dijibio.com)  
Tel: (86) 519 8805 0026

## PLXDC1 Antibody [#C11299]

**Catalog Number:** C11299

**Concentration:** 1mg/ml

**Swiss-Prot No.:** Q8IUUK5

**Other Names:** Plexin domain-containing protein 1, Tumor endothelial marker 7, Tumor endothelial marker 3, TEM3, TEM7

**Storage/Stability:** Store at -20°C/1 year

**Form of Antibody:** Rabbit IgG in phosphate buffered saline (without Mg<sup>2+</sup> and Ca<sup>2+</sup>), pH 7.4, 150mM NaCl, 0.02% sodium azide and 50% glycerol.

**Immunogen:** The antiserum was produced against synthesized peptide derived from Internal of human

PLXDC1.

**Purification:** The antibody was affinity-purified from rabbit antiserum by affinity-chromatography using epitope-specific immunogen.

**Specificity:** PLXDC1 antibody detects endogenous levels of total PLXDC1 protein.

**Reactivity:** Human

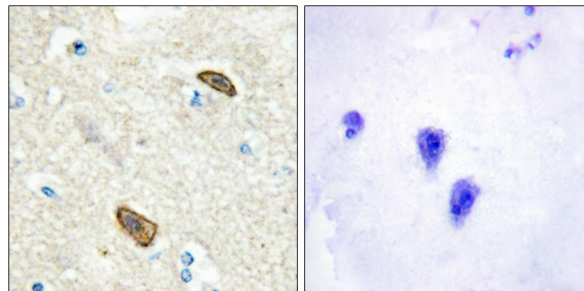
**Applications:** IHC: 1:50~1:100      ELISA: 1:20000

**References:**

St Croix B., Science 289:1197-1202(2000).

Carson-Walter E.B., Cancer Res. 61:6649-6655(2001).

Nanda A., Cancer Res. 64:8507-8511(2004).



Peptide

-

+

Immunohistochemical analysis of paraffin-embedded human brain tissue using PLXDC1 antibody.