



Web: [www.anbobio.com](http://www.anbobio.com)  
[www.dijibio.com](http://www.dijibio.com)  
Order: [order@dijibio.com](mailto:order@dijibio.com)  
Tel: (86) 519 8805 0026

## CDKL3 Antibody [#C11309]

**Catalog Number:** C11309

**Concentration:** 1mg/ml

**Swiss-Prot No.:** Q8IVW4

**Other Names:** Cyclin-dependent kinase-like 3, EC 2.7.11.22, Serine/threonine protein kinase NKIAMRE, CDKL3, NKIAMRE

**Storage/Stability:** Store at -20°C/1 year

**Form of Antibody:** Rabbit IgG in phosphate buffered saline (without Mg<sup>2+</sup> and Ca<sup>2+</sup>), pH 7.4, 150mM NaCl, 0.02% sodium azide and 50% glycerol.

**Immunogen:** The antiserum was produced against synthesized peptide derived from internal of human CDKL3.

**Purification:** The antibody was affinity-purified from rabbit antiserum by affinity-chromatography using epitope-specific immunogen.

**Specificity:** CDKL3 antibody detects endogenous levels of total CDKL3 protein.

**Reactivity:** Human (Identities = 100%, Positives = 100%)

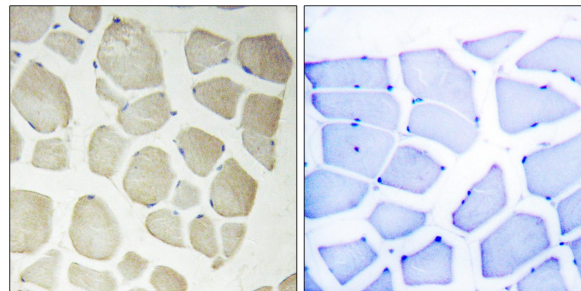
**Applications:** IHC: 1:50~1:100 ELISA: 1:5000

**References:**

Midmer M., Submitted (FEB-1999) to the EMBL/GenBank/DDBJ databases.

The MGC Project Team, Genome Res. 14:2121-2127(2004).

Greenman C., Nature 446:153-158(2007).



Peptide -

+

Immunohistochemistry analysis of paraffin-embedded human skeletal muscle tissue, using CDKL3 antibody.