



Web: [www.anbobio.com](http://www.anbobio.com)  
[www.dijibio.com](http://www.dijibio.com)  
Order: [order@dijibio.com](mailto:order@dijibio.com)  
Tel: (86) 519 8805 0026

## LMTK2 Antibody [#C11315]

**Catalog Number:** C11315

**Concentration:** 1mg/ml

**Swiss-Prot No.:** Q8IWU2

**Other Names:** 2900041G10Rik; BREK; cprk; EC 2.7.11.1; KIAA1079; kinase LMR2; kinase phosphatase inhibitor 2; KPI-2; lemur tyrosine kinase 2; LMTK2

**Storage/Stability:** Store at -20°C/1 year

**Form of Antibody:** Rabbit IgG in phosphate buffered saline (without Mg<sup>2+</sup> and Ca<sup>2+</sup>), pH 7.4, 150mM NaCl, 0.02% sodium azide and 50% glycerol.

**Immunogen:** The antiserum was produced against synthesized peptide derived from internal of human LMTK2.

**Purification:** The antibody was affinity-purified from rabbit antiserum by affinity-chromatography using epitope-specific immunogen.

**Specificity:** LMTK2 antibody detects endogenous levels of total LMTK2 protein.

**Reactivity:** Human

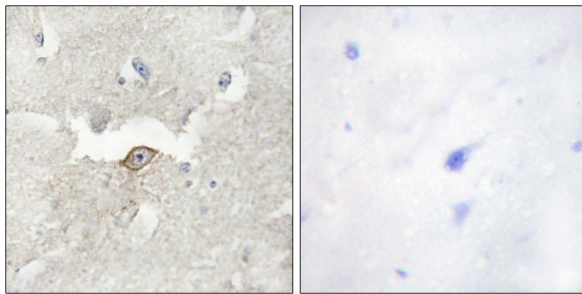
**Applications:** WB: 1:500~1:3000 IHC: 1:50~1:100  
IF: 1:100~1:500 ELISA: 1:20000

**References:**

Wang H., J. Biol. Chem. 277:49605-49612(2002).

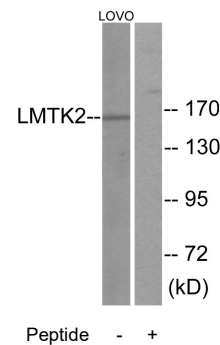
Kikuno R., DNA Res. 6:197-205(1999).

Hillier L.W., Nature 424:157-164(2003).

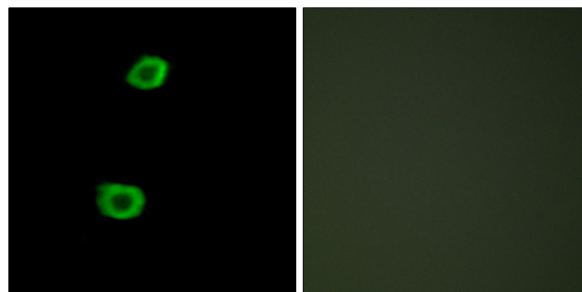


Peptide - +

Immunohistochemistry analysis of paraffin-embedded human brain tissue using LMTK2 antibody.



Western blot analysis of extracts from LOVO cells, using LMTK2 antibody.



Peptide - +

Immunofluorescence analysis of HepG2 cells, using LMTK2 antibody.