



Web: www.anbobio.com
www.dijibio.com
Order: order@dijibio.com
Tel: (86) 519 8805 0026

S6K- α 2 Antibody [#C11074]

Catalog Number: C11074

Concentration: 1mg/ml

Swiss-Prot No.: Q15349

Other Names: 90 kDa ribosomal protein S6 kinase 2, EC 2.7.11.1, KS6A2, RPS6KA2, RSK-3, Ribosomal S6 kinase 3, Ribosomal protein S6 kinase alpha 2, S6K-alpha 2, kinase RSK3, p90-RSK 2, pp90RSK3

Storage/Stability: Store at -20°C/1 year

Form of Antibody: Rabbit IgG in phosphate buffered saline (without Mg²⁺ and Ca²⁺), pH 7.4, 150mM NaCl, 0.02% sodium azide and 50% glycerol.

Immunogen: The antiserum was produced against synthesized peptide derived from internal of human

S6K- α 2.

Purification: The antibody was affinity-purified from rabbit antiserum by affinity-chromatography using epitope-specific immunogen.

Specificity: S6K- α 2 antibody detects endogenous levels of total S6K- α 2 protein.

Reactivity: Human (Identities = 100%, Positives = 100%);
Mouse (Identities = 100%, Positives = 100%)

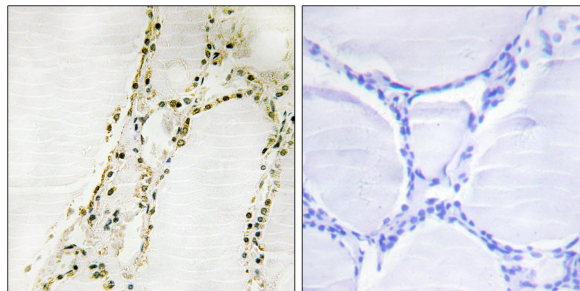
Applications: IHC: 1:50~1:100 ELISA: 1:1000

References:

Zhao Y., Mol. Cell. Biol. 15:4353-4363(1995).

Mungall A.J., Nature 425:805-811(2003).

Denis N.J., Proteomics 7:868-874(2007).



Peptide -

+

Immunohistochemistry analysis of paraffin-embedded human thyroid gland tissue, using S6K- α 2 antibody.