



Web: www.anbobio.com
www.dijibio.com
Order: order@dijibio.com
Tel: (86) 519 8805 0026

CKI- α 1/L Antibody [#C11354]

Catalog Number: C11354

Concentration: 1mg/ml

Swiss-Prot No.: Q8N752/P48729

Other Names: CK1, CK1-alpha2, CKI-alpha, CSNK1A1L, EC 2.7.11.1, KC1AL

Storage/Stability: Store at -20°C/1 year

Form of Antibody: Rabbit IgG in phosphate buffered saline (without Mg²⁺ and Ca²⁺), pH 7.4, 150mM NaCl, 0.02% sodium azide and 50% glycerol.

Immunogen: The antiserum was produced against synthesized peptide derived from internal of human CKI- α 1/L.

Purification: The antibody was affinity-purified from

rabbit antiserum by affinity-chromatography using epitope-specific immunogen.

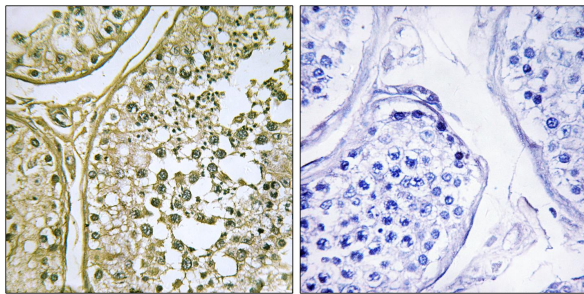
Specificity: CKI- α 1/L antibody detects endogenous levels of total CKI- α 1/L protein.

Reactivity: Human (Identities = 100%, Positives = 100%);
Mouse (Identities = 100%, Positives = 100%);
Rat (Identities = 100%, Positives = 100%)

Applications: IHC: 1:50~1:100 IF: 1:100~1:500
ELISA: 1:20000

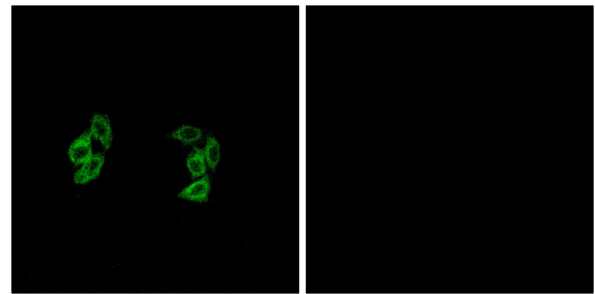
References:

The MGC Project Team, Genome Res. 14:2121-2127(2004).
Sjoeblom T., Science 314:268-274(2006).



Peptide - +

Immunohistochemistry analysis of paraffin-embedded human testis tissue, using CKI- α 1/L antibody.



Peptide - +

Immunofluorescence analysis of A549 cells, using CKI- α 1/L antibody.