



**Web:** [www.anbobio.com](http://www.anbobio.com)  
[www.dijibio.com](http://www.dijibio.com)  
**Order:** [order@dijibio.com](mailto:order@dijibio.com)  
**Tel:** (86) 519 8805 0026

## CAMK5 Antibody [#C11363]

**Catalog Number:** C11363

**Concentration:** 1mg/ml

**Swiss-Prot No.:** Q8NCB2

**Other Names:** CaM kinase-like vesicle-associated protein

**Storage/Stability:** Store at -20°C/1 year

**Form of Antibody:** Rabbit IgG in phosphate buffered saline (without Mg<sup>2+</sup> and Ca<sup>2+</sup>), pH 7.4, 150mM NaCl, 0.02% sodium azide and 50% glycerol.

**Immunogen:** The antiserum was produced against synthesized peptide derived from internal of human CAMK5.

**Purification:** The antibody was affinity-purified from

rabbit antiserum by affinity-chromatography using epitope-specific immunogen.

**Specificity:** CAMK5 antibody detects endogenous levels of total CAMK5 protein.

**Reactivity:** Human, Mouse, Rat

**Applications:** WB: 1:500~1:3000 IHC: 1:50~1:100

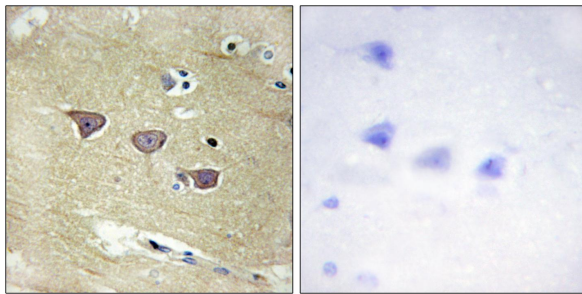
IF: 1:100~1:500 ELISA: 1:5000

**References:**

Ota T., Nat. Genet. 36:40-45(2004).

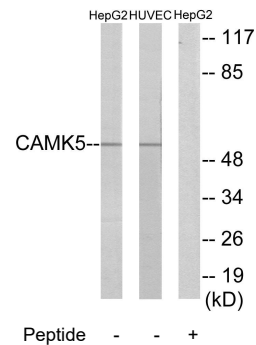
Wiemann S., Genome Res. 11:422-435(2001).

The MGC Project Team, Genome Res. 14:2121-2127(2004).

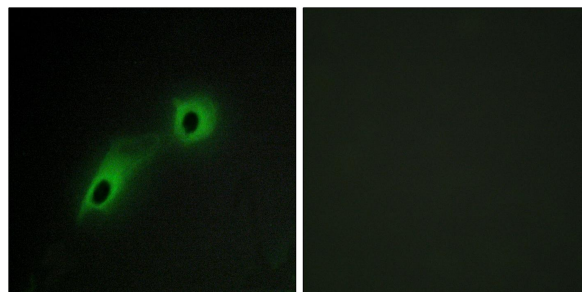


Peptide - +

Immunohistochemistry analysis of paraffin-embedded human brain tissue using CAMK5 antibody.



Western blot analysis of extracts from HepG2 cells and HUVEC cells, using CAMK5 antibody.



Peptide - +

Immunofluorescence analysis of HeLa cells, using CAMK5 antibody.