



Web: [www.anbobio.com](http://www.anbobio.com)  
[www.dijibio.com](http://www.dijibio.com)  
Order: [order@dijibio.com](mailto:order@dijibio.com)  
Tel: (86) 519 8805 0026

## PPHLN Antibody [#C11370]

**Catalog Number:** C11370

**Concentration:** 1mg/ml

**Swiss-Prot No.:** Q8NEY8

**Other Names:** Periphilin-1, Gastric cancer antigen Ga50, PPHLN1, HSPC206, HSPC232

**Storage/Stability:** Store at -20°C/1 year

**Form of Antibody:** Rabbit IgG in phosphate buffered saline (without Mg<sup>2+</sup> and Ca<sup>2+</sup>), pH 7.4, 150mM NaCl, 0.02% sodium azide and 50% glycerol.

**Immunogen:** The antiserum was produced against synthesized peptide derived from internal of human PPHLN.

**Purification:** The antibody was affinity-purified from rabbit antiserum by affinity-chromatography using epitope-specific immunogen.

**Specificity:** PPHLN antibody detects endogenous levels of total PPHLN protein.

**Reactivity:** Human, Mouse

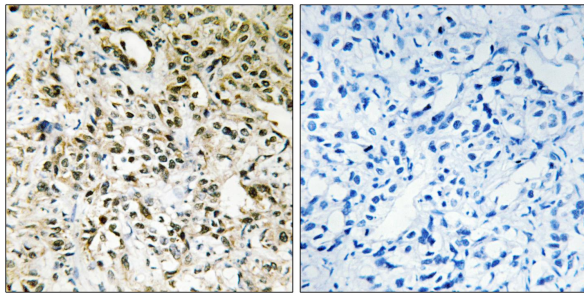
**Applications:** WB: 1:500~1:3000 IHC: 1:50~1:100  
ELISA: 1:5000

**References:**

Line A., Br. J. Cancer 86:1824-1830(2002).

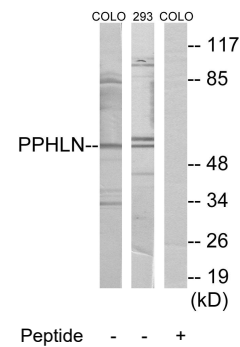
Kazerounian S., J. Biol. Chem. 278:36707-36717(2003).

Zhang Q.-H., Genome Res. 10:1546-1560(2000).



Peptide - +

Immunohistochemistry analysis of paraffin-embedded human liver carcinoma tissue using PPHLN antibody.



Western blot analysis of extracts from COLO cells and 293 cells, using PPHLN antibody.