



Web: www.anbobio.com
www.dijibio.com
Order: order@dijibio.com
Tel: (86) 519 8805 0026

BAF250B Antibody [#C11373]

Catalog Number: C11373

Concentration: 1mg/ml

Swiss-Prot No.: Q8NFD5

Other Names: ARID domain-containing protein 1B, Osa homolog 2, hOsa2, p250R, BRG1-binding protein hELD/OSA1, BRG1-associated factor 250b, BAF250B

Storage/Stability: Store at -20°C/1 year

Form of Antibody: Rabbit IgG in phosphate buffered saline (without Mg²⁺ and Ca²⁺), pH 7.4, 150mM NaCl, 0.02% sodium azide and 50% glycerol.

Immunogen: The antiserum was produced against synthesized peptide derived from interal of human BAF250B.

Purification: The antibody was affinity-purified from rabbit antiserum by affinity-chromatography using epitope-specific immunogen.

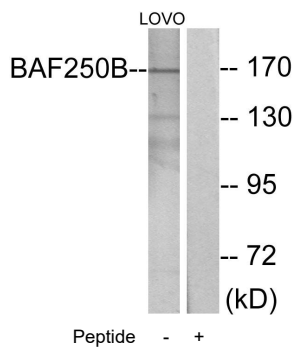
Specificity: BAF250B antibody detects endogenous levels of total BAF250B protein.

Reactivity: Human, Rat

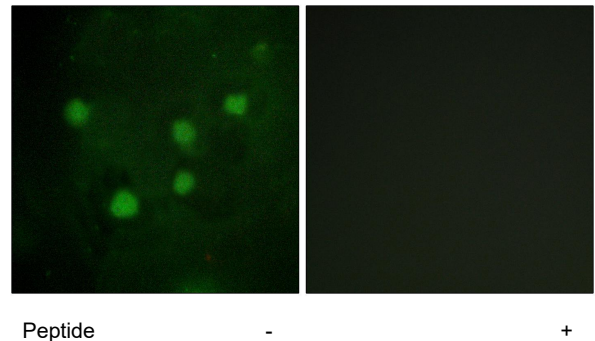
Applications: WB: 1:500~1:3000 IF: 1:00~1:500
ELISA: 1:10000

References:

Mungall A.J., Nature 425:805-811(2003).
Mangel L., J. Biol. Chem. 273:30466-30471(1998).
Imbert G., Nat. Genet. 14:285-291(1996).



Western blot analysis of extracts from LOVO cells, using BAF250B antibody.



Immunofluorescence analysis of HUVEC cells, using BAF250B antibody.