



Web: www.anbobio.com
www.dijibio.com
Order: order@dijibio.com
Tel: (86) 519 8805 0026

STEA2 Antibody [#C11375]

Catalog Number: C11375

Concentration: 1mg/ml

Swiss-Prot No.: Q8NFT2

Other Names: EC 1.16.1.-; Six-transmembrane epithelial antigen of prostate 2; SixTransMembrane protein of prostate 1; Prostate cancer-associated protein 1

Storage/Stability: Store at -20°C/1 year

Form of Antibody: Rabbit IgG in phosphate buffered saline (without Mg²⁺ and Ca²⁺), pH 7.4, 150mM NaCl, 0.02% sodium azide and 50% glycerol.

Immunogen: The antiserum was produced against synthesized peptide derived from C-terminal of human STEA2.

Purification: The antibody was affinity-purified from rabbit antiserum by affinity-chromatography using epitope-specific immunogen.

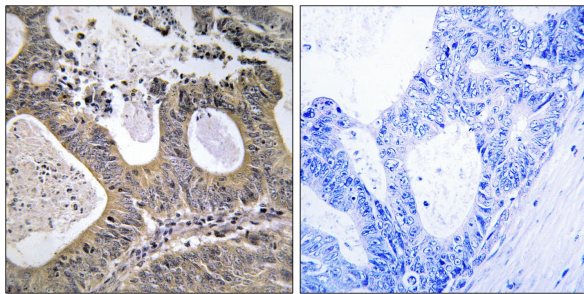
Specificity: STEA2 antibody detects endogenous levels of total STEA2 protein.

Reactivity: Human (Identities = 100%, Positives = 100%);
Mouse (Identities = 92%, Positives = 100%)

Applications: IHC: 1:50~1:100 IF: 1:00~1:500
ELISA: 1:1000

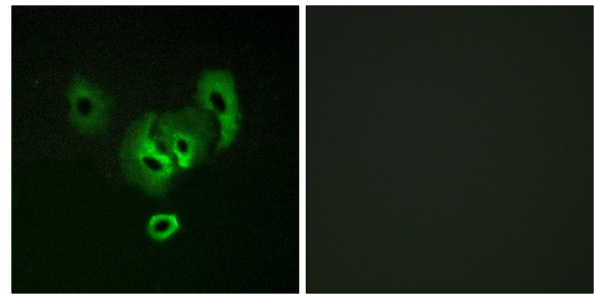
References:

Korkmaz K.S., J. Biol. Chem. 277:36689-36696(2002).
Porkka K.P., Lab. Invest. 82:1573-1582(2002).
Ohgami R.S., Blood 108:1388-1394(2006).



Peptide - +

Immunohistochemistry analysis of paraffin-embedded human colon carcinoma tissue, using STEA2 antibody.



Peptide - +

Immunofluorescence analysis of A549 cells, using STEA2 antibody.