



Web: www.anbobio.com
www.dijibio.com
Order: order@dijibio.com
Tel: +86 519 8805 0026

GRM7 Antibody [#G367]

Catalog Number: G367

Concentration: 1mg/ml

Swiss-Prot No.: Q14831

Other Names: GLUR7; GPRC1G; metabotropic glutamate receptor 7; mGlu7; MGR7

Storage/Stability: Store at -20°C/1 year

Form of Antibody: Rabbit IgG in phosphate buffered saline (without Mg²⁺ and Ca²⁺), pH 7.4, 150mM NaCl, 0.02% sodium azide and 50% glycerol.

Immunogen: The antiserum was produced against synthesized peptide derived from C-terminal of human GRM7.

Purification: The antibody was affinity-purified from rabbit antiserum by affinity-chromatography using epitope-specific immunogen.

Specificity: GRM7 antibody detects endogenous levels of total GRM7 protein.

Reactivity: Human, Mouse, Rat

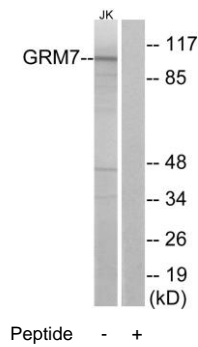
Applications: WB: 1:500~1:3000 IF: 1:100~1:500
ELISA: 1:40000

References:

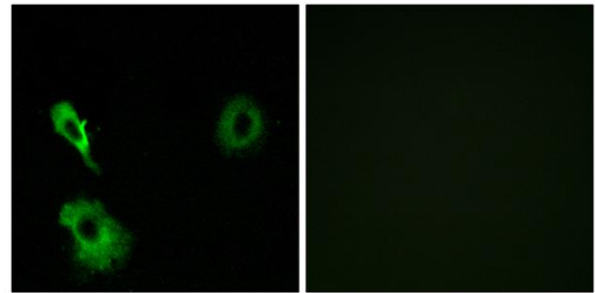
Makoff A., Brain Res. Mol. Brain Res. 40:165-170(1996).

Flor P.J., Neuropharmacology 36:153-159(1997).

Wu S., Brain Res. Mol. Brain Res. 53:88-97(1998).



Western blot analysis of extracts from Jurkat cells, using GRM7 antibody.



Immunofluorescence analysis of A549 cells, using GRM7 antibody.