



Web: www.anbobio.com
www.dijibio.com
Order: order@dijibio.com
Tel: +86 519 8805 0026

LGR6 Antibody [#G376]

Catalog Number: G376

Concentration: 1mg/ml

Swiss-Prot No.: Q9HBX8

Other Names: gonadotropin receptor; leucine-rich repeat-containing G-protein coupled receptor 6; VTS20631

Storage/Stability: Store at -20°C/1 year

Form of Antibody: Rabbit IgG in phosphate buffered saline (without Mg²⁺ and Ca²⁺), pH 7.4, 150mM NaCl, 0.02% sodium azide and 50% glycerol.

Immunogen: The antiserum was produced against synthesized peptide derived from internal of human LGR6.

Purification: The antibody was affinity-purified from rabbit antiserum by affinity-chromatography using epitope-specific immunogen.

Specificity: LGR6 antibody detects endogenous levels of total LGR6 protein.

Reactivity: Human

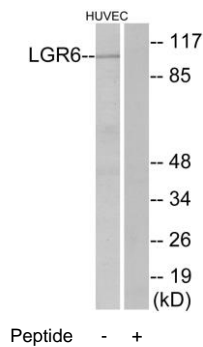
Applications: WB: 1:500~1:3000 IF: 1:100~1:500
ELISA: 1:1000

References:

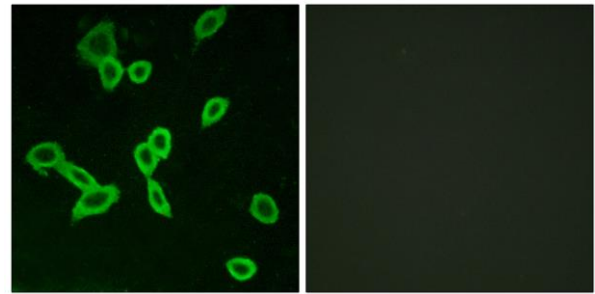
Hsu S.Y., Mol. Endocrinol. 14:1257-1271(2000).

Clark H.F., Genome Res. 13:2265-2270(2003).

Gregory S.G., Nature 441:315-321(2006).



Western blot analysis of extracts from HUVEC cells, using LGR6 antibody.



Immunofluorescence analysis of LOVO cells, using LGR6 antibody.