



**Web:** [www.anbobio.com](http://www.anbobio.com)  
[www.dijibio.com](http://www.dijibio.com)  
**Order:** [order@dijibio.com](mailto:order@dijibio.com)  
**Tel:** (86) 519 8805 0026

## MAPK15 Antibody [#C11391]

**Catalog Number:** C11391

**Concentration:** 1mg/ml

**Swiss-Prot No.:** Q8TD08

**Other Names:** EC 2.7.11.24; Extracellular signal-regulated kinase 8

**Storage/Stability:** Store at -20°C/1 year

**Form of Antibody:** Rabbit IgG in phosphate buffered saline (without Mg<sup>2+</sup> and Ca<sup>2+</sup>), pH 7.4, 150mM NaCl, 0.02% sodium azide and 50% glycerol.

**Immunogen:** The antiserum was produced against synthesized peptide derived from internal of human MAPK15.

**Purification:** The antibody was affinity-purified from rabbit antiserum by affinity-chromatography using epitope-specific immunogen.

**Specificity:** MAPK15 antibody detects endogenous levels of total MAPK15 protein.

**Reactivity:** Human (Identities = 100%, Positives = 100%)

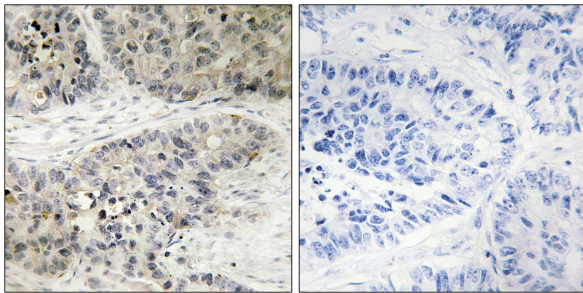
**Applications:** IHC: 1:50~1:100 IF: 1:100~1:500  
ELISA: 1:5000

**References:**

Abe M.K., J. Biol. Chem. 277:16733-16743(2002).

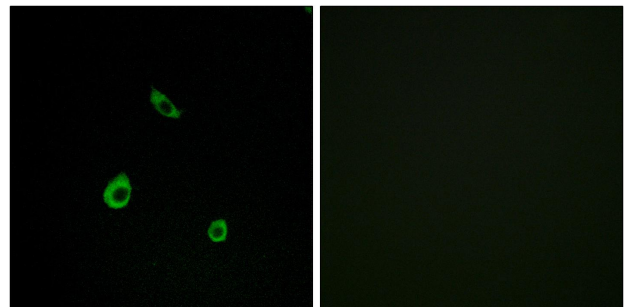
Iavarone C., J. Biol. Chem. 281:10567-10576(2006).

Saelzler M.P., J. Biol. Chem. 281:16821-16832(2006).



Peptide                      -                      +

Immunohistochemistry analysis of paraffin-embedded human lung carcinoma tissue, using MAPK15 antibody.



Peptide                      -                      +

Immunofluorescence analysis of LOVO cells, using MAPK15 antibody.