



**Web:** [www.anbobio.com](http://www.anbobio.com)  
[www.dijibio.com](http://www.dijibio.com)  
**Order:** [order@dijibio.com](mailto:order@dijibio.com)  
**Tel:** (86) 519 8805 0026

## ES8L1 Antibody [#C11395]

**Catalog Number:** C11395

**Concentration:** 1mg/ml

**Swiss-Prot No.:** Q8TE68

**Other Names:** Epidermal growth factor receptor kinase substrate 8-like protein 1, Epidermal growth factor receptor pathway substrate 8-related protein 1, EPS8-like protein 1, EPS8L1, DRC3, EPS8R1, PP10566

**Storage/Stability:** Store at -20°C/1 year

**Form of Antibody:** Rabbit IgG in phosphate buffered saline (without Mg<sup>2+</sup> and Ca<sup>2+</sup>), pH 7.4, 150mM NaCl, 0.02% sodium azide and 50% glycerol.

**Immunogen:** The antiserum was produced against synthesized peptide derived from internal of human ES8L1.

**Purification:** The antibody was affinity-purified from rabbit antiserum by affinity-chromatography using epitope-specific immunogen.

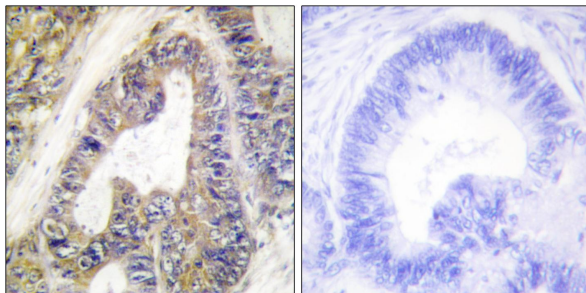
**Specificity:** ES8L1 antibody detects endogenous levels of total ES8L1 protein.

**Reactivity:** Human, Mouse

**Applications:** WB: 1:500~1:3000 IHC: 1:50~1:100  
ELISA: 1:20000

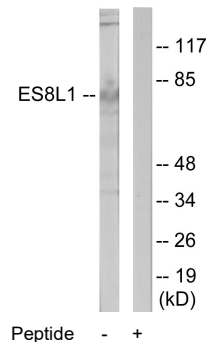
**References:**

Wu K., Zhonghua Yi Xue Yi Chuan Xue Za Zhi 16:325-327(1999).  
Tocchetti A., Genomics 81:234-244(2003).  
Wan D., Proc. Natl. Acad. Sci. U.S.A. 101:15724-15729(2004).



Peptide - +

Immunohistochemistry analysis of paraffin-embedded human colon carcinoma tissue using ES8L1 antibody.



Peptide - +

Western blot analysis of extracts from COLO205 cells, using ES8L1 antibody.