



**Web:** [www.anbobio.com](http://www.anbobio.com)  
[www.dijibio.com](http://www.dijibio.com)  
**Order:** [order@dijibio.com](mailto:order@dijibio.com)  
**Tel:** (86) 519 8805 0026

## PARD3 Antibody [#C11397]

**Catalog Number:** C11397

**Concentration:** 1mg/ml

**Swiss-Prot No.:** Q8TEW0

**Other Names:** Partitioning-defective 3 homolog, PARD-3, PAR-3, Atypical PKC isotype-specific-interacting protein, ASIP, CTCL tumor antigen se2-5, PAR3-alpha, PARD3, PAR3, PAR3A

**Storage/Stability:** Store at -20°C/1 year

**Form of Antibody:** Rabbit IgG in phosphate buffered saline (without Mg<sup>2+</sup> and Ca<sup>2+</sup>), pH 7.4, 150mM NaCl, 0.02% sodium azide and 50% glycerol.

**Immunogen:** The antiserum was produced against synthesized peptide derived from internal of human PARD3.

**Purification:** The antibody was affinity-purified from rabbit antiserum by affinity-chromatography using epitope-specific immunogen.

**Specificity:** PARD3 antibody detects endogenous levels of total PARD3 protein.

**Reactivity:** Human, Mouse, Rat

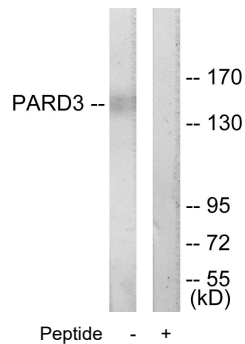
**Applications:** WB: 1:500~1:3000 IF: 1:100~1:500  
ELISA: 1:20000

**References:**

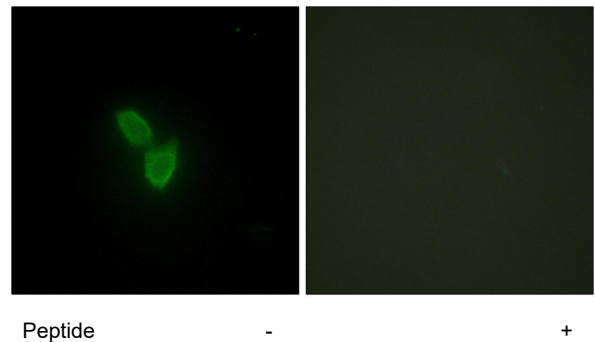
Joberty G., Nat. Cell Biol. 2:531-539(2000).

Fang C.M., Cell Res. 11:223-229(2001).

Kohjima M., Biochem. Biophys. Res. Commun. 299:641-646(2002).



Western blot analysis of extracts from COLO205 cells, using PARD3 antibody.



Immunofluorescence analysis of HepG2 cells, using PARD3 antibody.