



Web: www.anbobio.com
www.dijibio.com
Order: order@dijibio.com
Tel: (86) 519 8805 0026

DUS19 Antibody [#C11401]

Catalog Number: C11401

Concentration: 1mg/ml

Swiss-Prot No.: Q8WTR2

Other Names: Dual specificity protein phosphatase 19, EC 3.1.3.48, EC 3.1.3.16, Stress-activated protein kinase pathway-regulating phosphatase 1, Protein phosphatase SKRP1, Dual-specificity phosphatase TS-DSP1, LMW-DSP3, DUSP19, DUSP17, SKRP1

Storage/Stability: Store at -20°C/1 year

Form of Antibody: Rabbit IgG in phosphate buffered saline (without Mg²⁺ and Ca²⁺), pH 7.4, 150mM NaCl, 0.02% sodium azide and 50% glycerol.

Immunogen: The antiserum was produced against synthesized peptide derived from internal of human

DUS19.

Purification: The antibody was affinity-purified from rabbit antiserum by affinity-chromatography using epitope-specific immunogen.

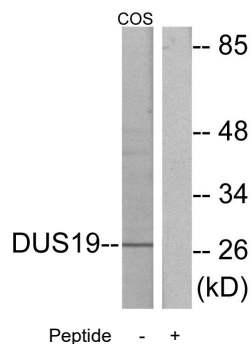
Specificity: DUS19 antibody detects endogenous levels of total DUS19 protein.

Reactivity: Human

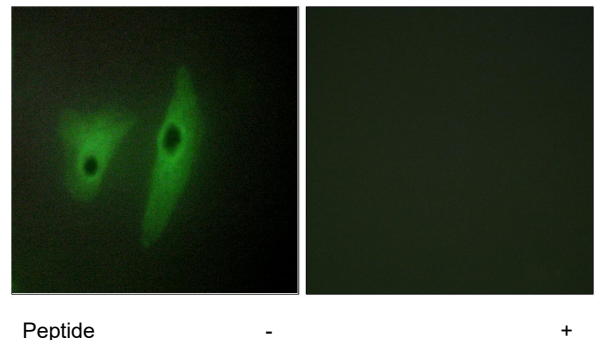
Applications: WB: 1:500~1:3000 IF: 1:100~1:500
ELISA: 1:20000

References:

Zama T., J. Biol. Chem. 277:23919-23926(2002).
Cheng H., Int. J. Biochem. Cell Biol. 35:226-234(2003).
Hillier L.W., Nature 434:724-731(2005).



Western blot analysis of extracts from COS-7 cells, using DUS19 antibody.



Immunofluorescence analysis of HeLa cells, using DUS19 antibody.