



Web: www.anbobio.com
www.dijibio.com
Order: order@dijibio.com
Tel: (86) 519 8805 0026

MADD Antibody [#C11414]

Catalog Number: C11414

Concentration: 1mg/ml

Swiss-Prot No.: Q8WXG6

Other Names: MAP kinase-activating death domain protein; Differentially expressed in normal and neoplastic cells; Insulinoma glucagonoma clone 20; Rab3 GDP/GTP exchange factor; MADD; DENN, IG20, KIAA0358

Storage/Stability: Store at -20°C/1 year

Form of Antibody: Rabbit IgG in phosphate buffered saline (without Mg²⁺ and Ca²⁺), pH 7.4, 150mM NaCl, 0.02% sodium azide and 50% glycerol.

Immunogen: The antiserum was produced against synthesized peptide derived from internal of human

MADD.

Purification: The antibody was affinity-purified from rabbit antiserum by affinity-chromatography using epitope-specific immunogen.

Specificity: MADD antibody detects endogenous levels of total MADD protein.

Reactivity: Human, Mouse, Rat

Applications: WB: 1:500~1:3000 IHC: 1:50~1:100

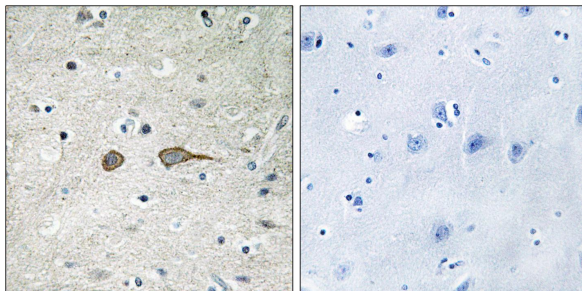
IF: 1:100~1:500 ELISA: 1:1000

References:

Chow V.T.K., DNA Seq. 6:263-273(1996).

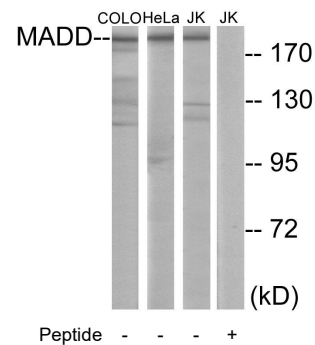
Schievella A.R., J. Biol. Chem. 272:12069-12075(1997).

Chow V.T.K., Genome 41:543-552(1998).



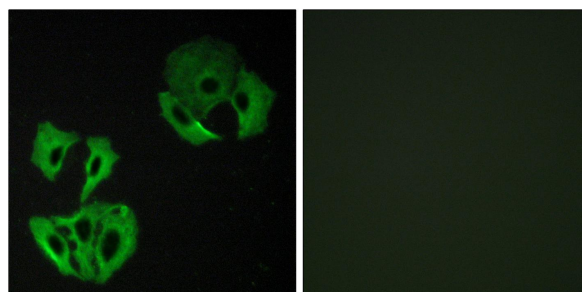
Peptide - +

Immunohistochemistry analysis of paraffin-embedded human brain tissue using MADD antibody.



Peptide - - - +

Western blot analysis of extracts from COLO cells, HeLa cells and Jurkat cells, using MADD antibody.



Peptide - +

Immunofluorescence analysis of A549 cells, using MADD antibody.