



Web: www.anbobio.com
www.dijibio.com
Order: order@dijibio.com
Tel: (86) 519 8805 0026

MUC16 Antibody [#C11416]

Catalog Number: C11416

Concentration: 1mg/ml

Swiss-Prot No.: Q8WXI7

Other Names: Mucin-16, Ovarian carcinoma antigen CA125, Ovarian cancer-related tumor marker CA125, CA-125, MUC16, CA125

Storage/Stability: Store at -20°C/1 year

Form of Antibody: Rabbit IgG in phosphate buffered saline (without Mg²⁺ and Ca²⁺), pH 7.4, 150mM NaCl, 0.02% sodium azide and 50% glycerol.

Immunogen: The antiserum was produced against synthesized peptide derived from internal of human

MUC16.

Purification: The antibody was affinity-purified from rabbit antiserum by affinity-chromatography using epitope-specific immunogen.

Specificity: MUC16 antibody detects endogenous levels of total MUC16 protein.

Reactivity: Human (Identities = 100%, Positives = 100%)

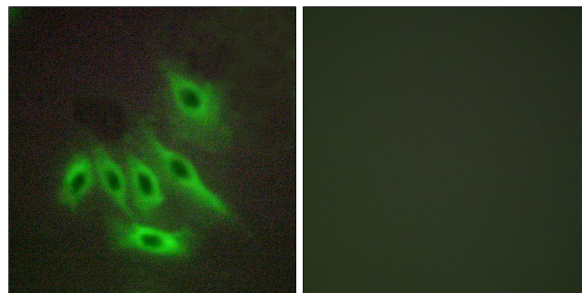
Applications: IF: 1:100~1:500 ELISA: 1:40000

References:

O'Brien T.J., Tumor Biol. 23:154-169(2002).

O'Brien T.J., Tumor Biol. 22:348-366(2001).

Yin B.W.T., J. Biol. Chem. 276:27371-27375(2001).



Peptide

-

+

Immunofluorescence analysis of HepG2 cells, using MUC16 antibody.