



Web: www.anbobio.com
www.dijibio.com
Order: order@dijibio.com
Tel: (86) 519 8805 0026

BRI3B Antibody [#C11418]

Catalog Number: C11418

Concentration: 1mg/ml

Swiss-Prot No.: Q8WY22

Other Names: BRI3-binding protein, I3-binding protein, Cervical cancer 1 proto-oncogene-binding protein KG19, HCCR-1, BRI3BP, KG19

Storage/Stability: Store at -20°C/1 year

Form of Antibody: Rabbit IgG in phosphate buffered saline (without Mg²⁺ and Ca²⁺), pH 7.4, 150mM NaCl, 0.02% sodium azide and 50% glycerol.

Immunogen: The antiserum was produced against synthesized peptide derived from internal of human BRI3B.

Purification: The antibody was affinity-purified from

rabbit antiserum by affinity-chromatography using epitope-specific immunogen.

Specificity: BRI3B antibody detects endogenous levels of total BRI3B protein.

Reactivity: Human, Mouse

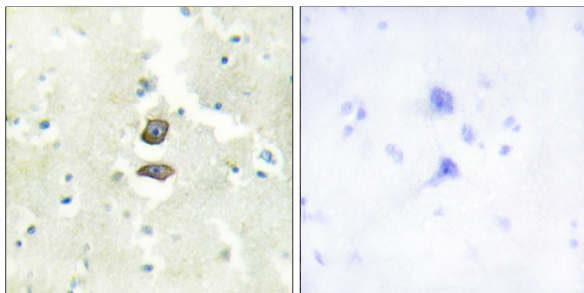
Applications: WB: 1:500~1:3000 IHC: 1:50~1:100
ELISA: 1:20000

References:

Lin L., Biochem. Genet. 39:369-377(2001).

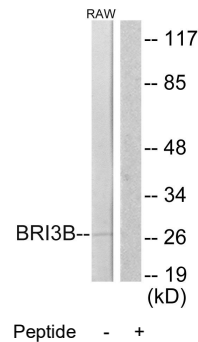
The MGC Project Team, Genome Res. 14:2121-2127(2004).

Kim J.W., Submitted (FEB-2002) to the EMBL/GenBank/DDBJ databases.



Peptide - +

Immunohistochemistry analysis of paraffin-embedded human brain tissue using BRI3B antibody.



Peptide - +

Western blot analysis of extracts from RAW264.7 cells, using BRI3B antibody.