



Web: [www.anbobio.com](http://www.anbobio.com)  
[www.dijibio.com](http://www.dijibio.com)  
Order: [order@dijibio.com](mailto:order@dijibio.com)  
Tel: (86) 519 8805 0026

## SMG7 Antibody [#C11424]

**Catalog Number:** C11424

**Concentration:** 1mg/ml

**Swiss-Prot No.:** Q92540

**Other Names:** C1orf16,EST1C,KIAA0250

**Storage/Stability:** Store at -20°C/1 year

**Form of Antibody:** Rabbit IgG in phosphate buffered saline (without Mg<sup>2+</sup> and Ca<sup>2+</sup>), pH 7.4, 150mM NaCl, 0.02% sodium azide and 50% glycerol.

**Immunogen:** The antiserum was produced against synthesized peptide derived from internal of human SMG7.

**Purification:** The antibody was affinity-purified from

rabbit antiserum by affinity-chromatography using epitope-specific immunogen.

**Specificity:** SMG7 antibody detects endogenous levels of total SMG7 protein.

**Reactivity:** Human

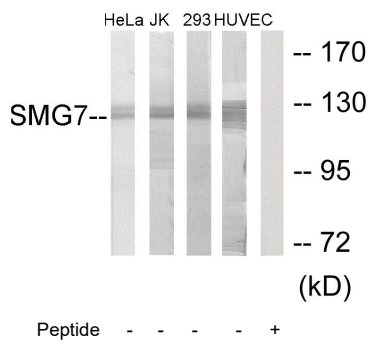
**Applications:** WB: 1:500~1:3000 IF: 1:100~1:500  
ELISA: 1:1000

**References:**

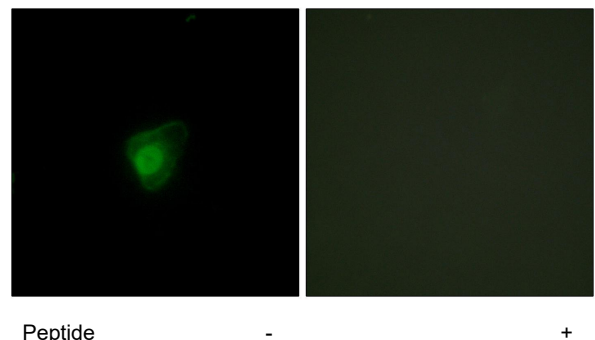
Ohnishi T., Mol. Cell 12:1187-1200(2003).

Nagase T., DNA Res. 3:321-329(1996).

Nakajima D., DNA Res. 9:99-106(2002).



Western blot analysis of extracts from HeLa cells, Jurkat cells, 293 cells and HUVEC cells, using SMG7 antibody.



Immunofluorescence analysis of HepG2 cells, using SMG7 antibody.